

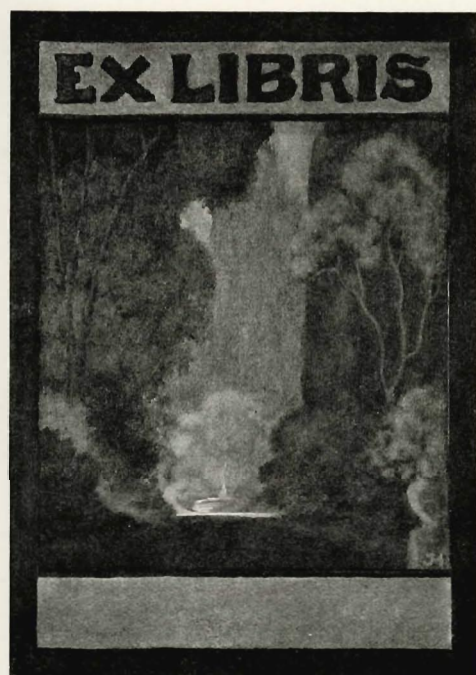
LD
718
D4
1926
c.2
fo.

SAN DIEGO STATE UNIVERSITY



3 0650 00019 8370

55074



Del Sudoeste 1926

*Published Annually by
San Diego State College*



378/
3194d
1926
cop. 2
Ref. Desk

55074



LD
718
D4
1926
c. 2
fo

Jasnet Holding

Page Five

FOREWORD

You have before you a piece of work, the preparation of which has taken weeks of concentrated effort and careful planning. In the past the "Del Sudoeste" has looked backward for its theme, but this year we have taken for the motif, the beauty of San Diego as it is today, and as we hope it will always be. So—without apologies, we place in your hands the result of our toil—it is yours. If we have succeeded in making it a thing of beauty, we have achieved our goal; if we have failed, we at least have the consolation of knowing that we did our best.

CONTENTS

<i>Staff</i>	8
<i>The College</i>	10
<i>President's Message</i>	18
<i>Faculty</i>	20
<i>Graduates</i>	24
<i>Teacher's Certificate Students</i>	27
<i>Junior Certificate Students</i>	39
<i>Classes</i>	45
<i>Activities</i>	48
<i>Fraternal Organizations</i>	70
<i>Calendar</i>	104
<i>Athletics</i>	112
<i>Humor</i>	134

DEL SUDOESTE STAFF

HUGH GILLIS
Editor-in-chief
Business Manager

SUE WOLFER
Assistant Editor

VIRGINIA WENRICH
Organizations

ARTHA TYLER
Organizations

EVELYN HARPER
Organizations

ALYCE FOSTER
Snaps

JANET HELDRING
Art

FRANCIS KNAPP
Advertising Manager

ANONA STINNETT
Advertising

TERENCE GEDDIS
Photography

DONALD BRAND
Sports

DAVID BARNES
Humor

HARRIET POLLOCK
Snaps

EARL ANDREEN
Snaps

ELSIE MORIARTY
Art Editor

LOUISE EDELBROCK
Typist



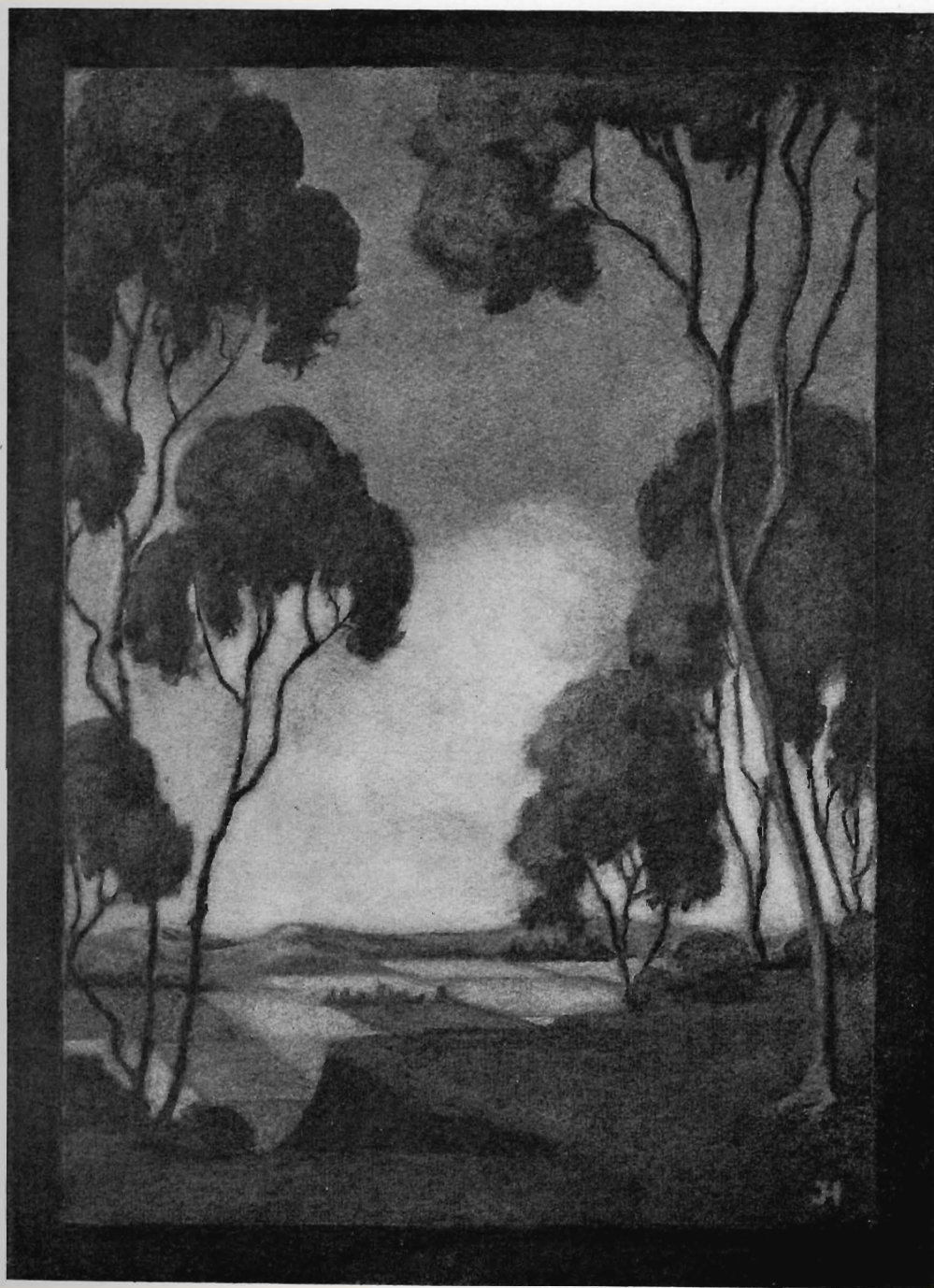
TERENCE GEDDIS
DONALD BRAND
HARRIET POLLOCK
ELSIE MORIARTY
EVELYN HARPER

HUGH GILLIS
SUE WOLFER
FRANCIS KNAPP
EARL ANDREEN
ALYCE FOSTER
LOUISE EDELBROCK

VIRGINIA WENRICH
JANET HELDRING
ANONA STINNETT
ARTHA TYLER
DAVID BARNES

The College

Overlooking Mission Valley
By Janet Heldring



FAIR SAN DIEGO

Wilfred Knudston



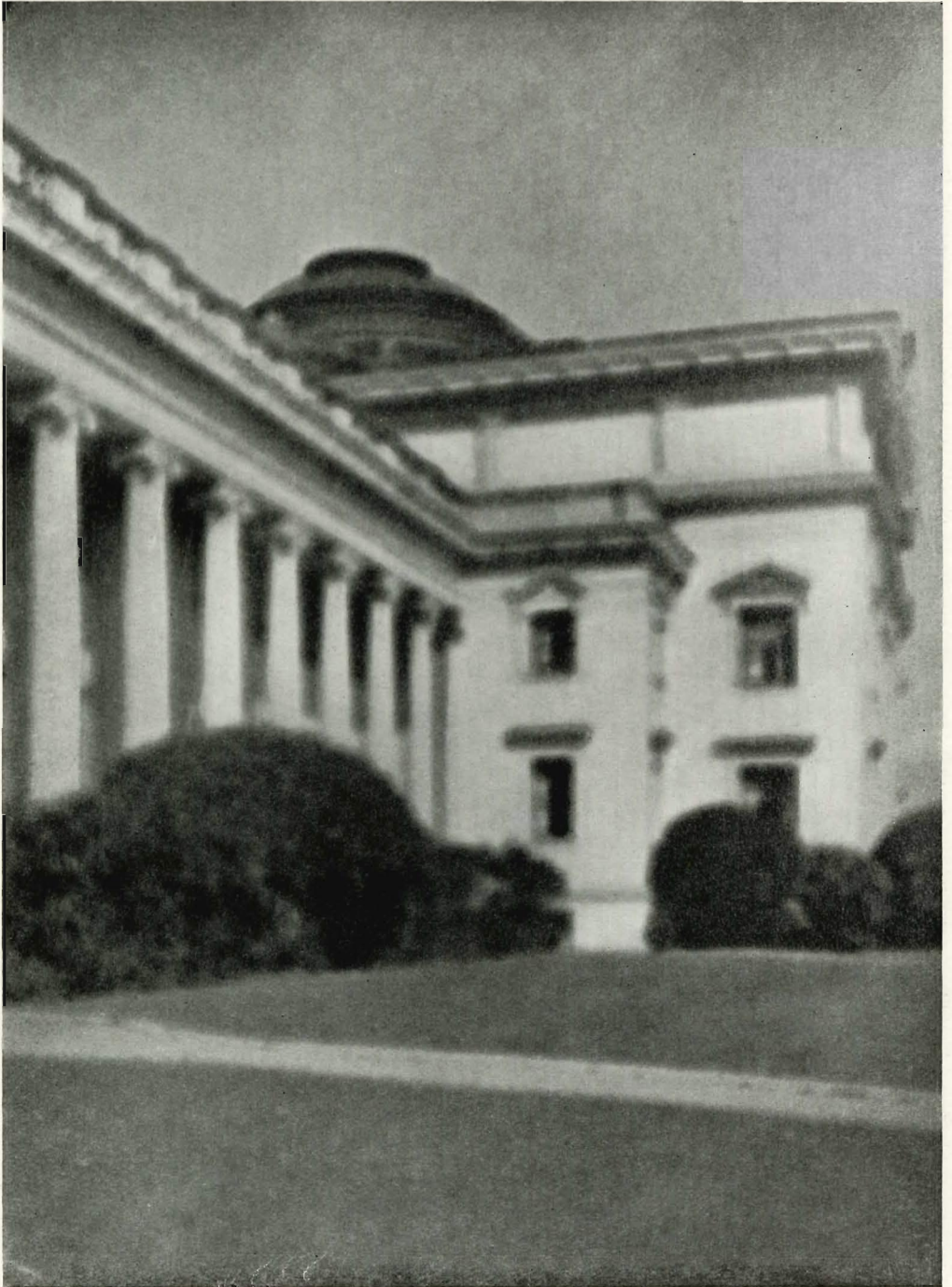
Fair San Diego, we will praise
Thy name through all the coming days;
Thy faith in us will lead us on
When we have crossed our Rubicon.

And though we win the world and fame,
We'll ne'er forget thy precious name;
Far down the years, when we are old,
We'll love thy purple and thy gold.

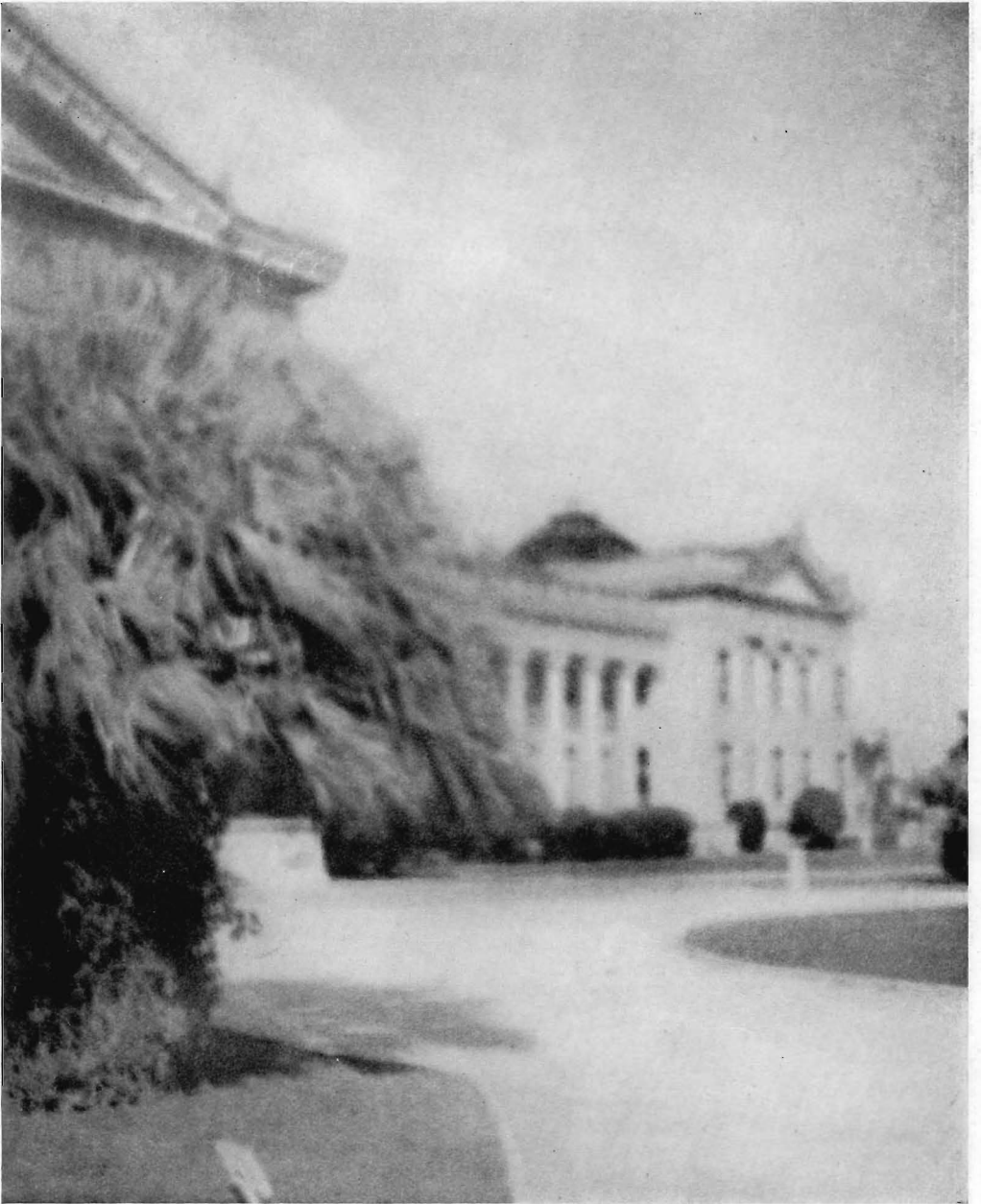
Though thy old walls fall to decay
These friendships blest will live for aye;
'Tis best to ever loving be
Like Him who taught in Galilee.

We walk in godly liberty—
Thy truth doth make us truly free.
Though we may die and live anew,
Fair San Diego, we'll be true.











PRESIDENT'S MESSAGE

*To the Students of the State College of
San Diego:—*

"The art of reading is a great art."

This statement, offered repeatedly as an observation, not as advice, by a professor of philosophy, was worth the course to a group of university students in which I had membership early in the "gay nineties."

To you, in the more than gay twenties of this century, I offer it (not at all as advice) with amendment. Let it be read:—

"The art of living is a great art."



E. L. HARDY

OFFICERS AND FACULTY

OFFICERS

EDWARD L. HARDY	President
ARTHUR G. PETERSON	Dean
MRS. ADA HUGHES COLDWELL	Dean of Women
WILLIS E. JOHNSON	Director, Department of Education
MRS. FLORENCE BRYANT DELANO	Registrar
MRS. CHARLOTTE G. ROBINSON	Librarian
WINIFRED WOODS	Assistant Librarian
GENEVIEVE KELLY	Assistant Librarian
F. W. VAN HORNE	Business Secretary
DOROTHY E. MILLER	Assistant Secretary
C. L. FISKE	Superintendent of Buildings
MARTIN ROTH	Superintendent of Grounds
A. L. SEELIG	Engineer

FACULTY

WITH DATE OF APPOINTMENT

EDWARD L. HARDY, B. L., M. A., 1910	GEORGIA C. AMSDEN
ARTHUR G. PETERSON, A. B., M. A., 1921	KENNETH POTTER, A. B., 1926
MRS. ADA HUGHES COLDWELL, 1907	EDGAR L. HEWITT, D. Sc., 1922
IRVING E. OUTCALT, A. B., M. A., 1912	MYRTLE ELIZABETH JOHNSON, B. S., M. S., Ph. D., 1921
WILLIS E. JOHNSON, Ph. B., Sc. D., Ph. D., L. L. D., 1924	MARJORIE E. LANDERS, A. B., 1924
MRS. GERTRUDE SUMPTION BELL, A. B., M. A., 1916	F. H. LANE, A. B., A. M., 1923
O. W. BAIRD, A. B., 1921	GEORGE R. LIVINGSTON, B. S., M. A., 1921
RUTH C. BAGLEY, A. B., A. M., 1921	WILLIAM L. NIDA, Ph. B., 1921
MARY BENTON, 1916	MARIAN L. PEEK, A. B., A. M., 1923
MRS. ALICE BIRD, 1924	CHARLES E. PETERSON, 1921
LESLIE P. BROWN, A. B., M. A., 1922	LEO F. PIERCE, B. S., M. Sc., Ph. D., 1925
VINNIE B. CLARK, A. B., 1914	ALICE M. RAW, A. B., 1923
KATHERINE E. CORBETT, B. Pd., B. S., A. M., 1921	MABEL M. RICHARDS, A. B., A. M., 1921
GEORGIA V. COY, Ph. D., 1912	CHARLES R. SCUDDER, 1918
LESLIE S. EVERTS, B. L., 1921	W. T. SKILLING, M. S., B. S., 1901
EDITH C. HAMMACK, B. A., 1910	FLORENCE L. SMITH, A. B., M. A., 1917
MRS. ALICE LILI HEIMERS, Ph. D., 1924	LEILA D. SMITH, Mus. B., A. B., 1922
WALLACE A. GILKEY, A. B., C. E., 1925	WILL J. STANTON, LL. B., 1921
J. W. AULT, M. A., 1925	SMITH L. STOVALL, A. B., 1924
	JESSIE RAND TANNER, B. S., 1904
	WILLIAM H. WRIGHT, B. S., 1922



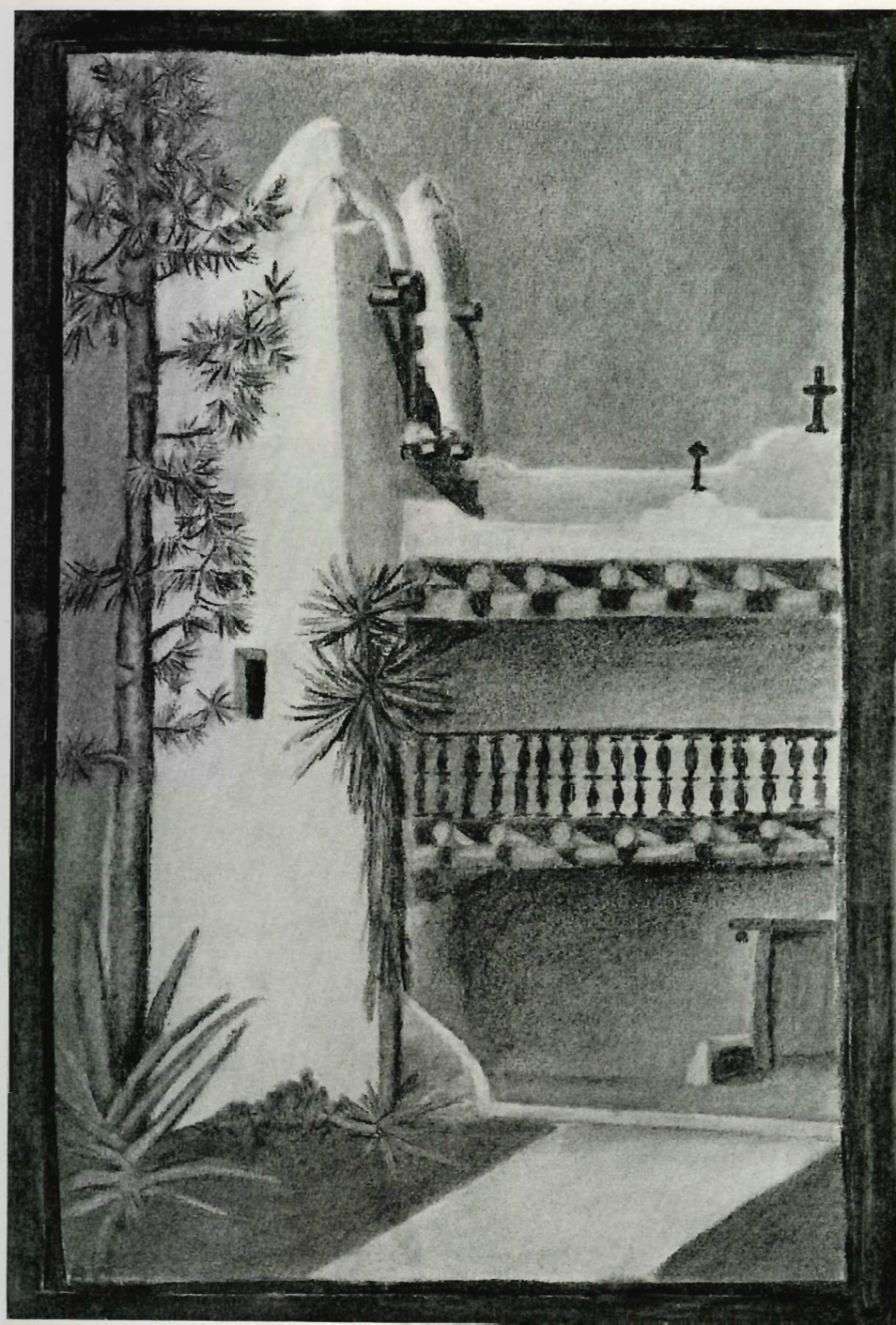
Ada Hughes Colman



Arthur H. Peterson

Classes

"New Mexico Building"





FLORENCE OLIVE AUSTIN, B. A., B. S., M. D.
A. B. Degree in Education
 Cap and Gown '26; Comparative Religions Class '26.

WINTHROP G. BLEECKER, Delta Phi
A. B. Degree in Education
 Councilor of the Cap and Gown '26.

HELEN L. BRODERSON

MRS. LENA CROUSE

ALMYRA DAWSON

MILDRED L. FISHER
A. B. Degree in Education.
Peru State Teachers' College, Peru, Nebraska.
 Dramatic Club; Girls' Glee Club; Art Editor of
 Annual; Secretary Debating Society; Y. W. C. A.;
 Chorus; Vice-President of Girls' Athletic Association.
 San Diego State College: S. A. B. E. '26; Council
 of Cap and Gown '26.

ELLEN ELIZABETH FOOTE
A. B. Degree in Education.
Minneapolis Minnesota Central High School.
 Graduate of Chicago Normal School of Physical
 Education; Columbia University; University of Min-
 nesota; S. A. B. E.; Cap and Gown.

DOROTHEA FOX

ALICE ROSE GEORGIA

*A. B. Degree in Education.
San Diego High School.*

President Junior Class; Treasurer A. S. B.; Vice-president Senior Class; Philomel Chorus, Dog Watch Crew, San Diego Normal; Vice Councilor Cap and Gown '26; S. A. B. E. Club '26.

GERTRUDE HAWKINS

LUCILE HILDRETH

LAVANGE HUNT, Skull and Dagger

High School, Craig, Missouri.

Vice-President Two Masque Players '23; "Trelawney of the Wells" '25; Executive Secretary of Dramatics '25, '26; "New York Idea" '26; Assistant Director of "A Little Journey" '26; Debate with College of Pacific '26; Secretary Cap and Gown '26.

GILBERT DEWEY JUDY

A. B. Degree in Education.

Cap and Gown; S. A. B. E., Y. M. C. A.; Ad Club; Omega Zeta Phi, Bethany College.

EMILY MELICENT KELLY

A. B. Degree in Education.

San Diego High School.

San Diego Normal School '21.

Cap and Gown '26; Secretary S. A. B. E. '26; Press Committee S. A. B. E. '26.





HELEN MORIARTY
SALLIE SEON
STERLING S. SMITH

BEATRICE SPRAGUE
MILDRED STINT
BEULAH SYLVESTER

MARTHA KETTLE, Tau Zeta Rho

*A. B. Degree in Education.
San Diego High School.
Cap and Gown.*

NOEL P. LAPHAM

*A. B. Degree in Education.
Paper Lantern '25; Publicity Councillor of Cap and
Gown '26; S. A. B. E. '25, '26; President S. A. B. E.
'26.*

GERTRUDE MOREIN

MAXINE MURPHY, Komo

*Teachers' College.
High School, Bolton, Texas.
Council Cap and Gown '26; Geography Club '26;
President S. A. B. E. Club '25; J. U. G. Club '25, '26;
Rowing '25, '26.*

HARRIET PEARSON

LUCILE STILES

MRS. OLIVE H. TAYLOR

MRS. F. W. BROWNLEE	ERNESTINE PETERMANN
HARRY P. COMPTON	ESTHER LUCILE WALKER
MRS. GERTRUDE DILLON	GRACE WALKER
J. R. GLOYD	MABEL BROWN
TOM HESTER	GEORGE DOTSON
RACHEL LINDBERG	H. L. GARDINER
RUTH MUNSELL	MINNIE HAMEN
EDITH REED	P. H. HERON
MRS. D. ROSS	WILLIS W. JONES
ALICE L. COROTHERS	SARA B. LEISENRING
VIRGINIA E. GRAY	MRS. U. S. MACMACKEN
AUDREY MCCLELLEN	RUTH E. MERRILL
ADA VAUGHN	JAMES BLEE
PAULINE E. WEBSTER	PEDRO DE MATA
MRS. O. M. WILSON	

HAZEL MARIE BALL

*Teachers' College.
Derby High School, Kansas.*

BEATRICE H. BANKERD

KATHERINE RAMONA BILDERAIN

*Teachers' College.
San Bernardino High School.
Jug club '24, '25, '26; Hiking '25, '26; Rowing '25, '26;
Basketball '25; Volleyball '25; Baseball '26; Folk-
dancing '25, '26.*

LOVENIA BOUDINOT

*Teachers' College.
Escondido High School.
S. A. B. E. Club '26.*

FRANCES BERYL BUCK, Sphinx

*Teachers' College.
San Diego High School.
Glee Club '24, '25; Art Club '25, '26.*

LAURA CHASE

*Orchestra '24, '26; Treble Clef '24, '25, '26; "Pirates
of Penzance" '25; "Robin Hood" '26.*

BONITA NELL CLARK

*Teachers' College.
Roosevelt High School, Rosevelt, New Mexico.
Spanish Club '24, '25; "The Prince Who Learned
Everything Out Of Books"; "Golden Doom";
"Ashes of Roses"; "The Merediths Entertain";
Charter member Art Club '26.*





BELLE LLOYD CLAYTON

Teachers' College.
Ames-Iowa State College, 1913.
 S. A. B. E. Club Vice-President '25.

ALVINA PEARL COGHLAN, Phi Kappa Gamma.

Teachers' College.
San Diego High School.
 Rowing '25; Representative to Inter Fraternity-Sorority Council, '25, '26.

KATHRYN STANTON COLE

ESTELLE CONDITT, Gamma Phi Zeta.

Teachers' College.
Holtville High School.
 Geography Club.

MRS. ELIZABETH COOKE

GERTRUDE NEY COULTHURST

Teachers' College.
San Diego High School.
 College Women's Y '24, '25, '26; Program Chairman
 College Women's Y '25, '26; Secretary Geography
 Club '25, '26; Volley Ball '25; Rowing '24, '25, '26.

NEVA CURTIS, Sigma Pi Theta

Teachers' College.
Brawley, California.

EVALINA PAULINE DANNER

Teachers' College.

Orange Union High School.

Art Club '26; Hiking '26; Swimming '25, '26; Folk
Dancing '25, '26; Basketball '25.

MRS. LAURA DARBY

MAY DAVIDSON, Komo

Teachers' College.

San Diego High School.

College Y '24, '25; Secretary Art Club '26; Athletic
Numeral, Athletic Letter '26.

ELIZABETH J. DENNIS, Phi Kappa Gamma

Teachers' College.

San Diego High School

Secretary Women's Athletic Association '25, '26;
Aztec Staff '25; Basketball, Volleyball, Indoor, Ten-
nis '24, '25; Captain of Champion Rowing Crew '25;
Delegate to Western Section A. C. A. C. W. Con-
ference '25; Member of Women's "S" Society.

MILDRED JANE DEWEY, Komo

Teachers' College.

Chanute, Kansas, High School.

Rowing '24; Volleyball '24; Basketball '25.

MARGARET RUTH DE WITT

Teachers' College.

San Diego High School.

CLARICE THEODORA DEWITZ

Teachers' College.

San Diego High School.

J. U. G. Club '24, '25, '26; Geography Club '25, '26;
Vice President of J. U. G. '25; President of J. U. G.
'26; Basketball '25; Tennis '26; Rowing '25, '26; Folk
Dancing '26.





ESTHER ECKMAN

LOUISE ELIZABETH EDELBROCK

Teachers' College.
San Diego High School.
 Rowing '24, '25, '26; College Women's Y '25, '26;
 Feminine Frolics '24, '25; Geography Club '26;
 Program Chairman Geography Club '26; Del Sudoeste
 Staff '26.

CHRISTINE SIMPSON ERIKSON, Skull and Dagger

Teachers' College.
San Diego High School.
 President of Two Masque Players '25; Treble Clef
 '24, '25, '26; Mabel in "Pirates of Penzance" '25;
 Anabelle in "Robin Hood" '26; Olga in "A Hot Day"
 '26; Invitation Committee for Graduating Class '26.

THELMA FISH

MARGARET FRANCES FOSTER

Teachers' College.
San Bernardino High School.
 Two Masque Players '24, '25; "The New York Idea"
 '25; Art Club '25, '26; Volleyball '24, '25.

VICTORIA C. FRAINE

Teachers' College.
San Diego High School.

BERNICE THERESA FRIEDRICH

Teachers' College.
Escondido Union High School.
 Rowing '25; Tennis '26.

FANNY FREED

Teachers' College.
South Philadelphia High School.
Two Masque Players '24, '25, '26; Art Club '26;
"Lily" in "A Little Journey" '26; Stage Force for
"Robin Hood" '26.

GRACE HELEN GANS, Phi Kappa Gamma

Teachers' College.
San Diego High School.
Basketball '25; Volleyball '25; Indoor '24, '25;
Fencing '25; Rowing '24, '25; Member of Champion
Rowing Crew '25; Captain Basketball '25; Secretary
Women's "S" Society '25; Student Faculty Council
'24.

ADA GENE GARFIELD

Teachers' College.
Grossmont High School.
"A Little Journey" '26.

HAZEL GIBSON

MARGARET EVELYN GILES, Komo

Teachers' College.
Grossmont Union High School.
"Once in A Blue Moon" Orchestra '24; Vice-president
Women's Athletic Association '25; President Women's
Athletic Association '26; A. W. S. Scholarship '25;
Manager Tennis '25; Tennis Team '24; Member
Letter Society '25; "Girl With the Green Eyes" '25;
Charter Member and President of Art Club '26;
Executive Committee '26.

MRS. MILDRED M. GRAY

DOROTHY LOUISE HALL, Phi Kappa Gamma

Teachers' College.
San Diego High School.
Treble Clef '24, '25, '26; Student Faculty Council,
'24, '25; Vice-president Treble Clef '25, '26; Girls'
Quartette '24, '25, '26; "Ruth" in "Pirates of Pen-
zance" '25; Pianist for "Robin Hood" '26.





PATRICIA HALL

CARMETTA JEMIMA HARRIS

Teachers' College.
San Diego High School.
 J. U. G. Club '25; Geography Club '25; Treasurer
 J. U. G. Club '26; Vice-President Geography Club '26;
 Rowing '25, '26.

FLORENCE HART

LORRAINE HARVEY, Shen Yo

Teachers' College.
San Diego High School.
 Two Masque Players '25; Secretary Two Masque
 Players '26; Society Staff Aztec '24, '25.

GRACE RUTH HILDRETH

Teachers' College.
Julian High School.
 Jug Club '25; Rowing '25; Volleyball '25; Basket
 Ball '25; Tennis '25, '26.

MRS. ELIZABETH G. HONAN

MYRTLE ALMA HUGHES

Teachers' College.
Wabasha, Minnesota, High School.
 Treble Clef; Minnesota University.

LILLIAN JOHNSON

RUTH GENEVIEVE JOY

Teachers' College.
San Diego High School.
Indoor '24, '25; Volleyball '24, '25; Basketball '24,
'25; Treble Clef '24, '25, '26; Tennis '25, '26.

MARGARET NEAL JULIAN, Phi Kappa Gamma

Teachers' College.
El Centro High School.
Rowing '24; Jug Club '24, '25.

MILDRED MARGARET KAY

Teachers' College.
Kensington High School, Philadelphia.
Treble Clef '26; "Lady Marion" in "Robin Hood"
'26.

EVELYN MAY KITTINGER

Teachers' College.
Sault Ste. Marie, Ontario, Canada.
Sabe Club '25, '26.

LORENNE RAY LAUBMAYER

Teachers' College.
San Diego High School.
J. U. G. Club '24, '25, '26; Vice-President J. U. G.
Club '25; S. A. B. E. Club '26; Charter Member Art
Club '26.

ADELINE ALICE LOUITTIT, Phi Kappa Gamma

Teachers' College.
San Diego High School.
"The Golden Doom" '25; Rowing '25; Swimming
'25, '26; Tennis '25, '26; Aztec Staff '26; House
committee '26.





ELLEN LOUTTIT, Phi Kappa Gamma
Teachers' College.
San Diego High School.

LILLIAN AMANDA MACKIN
Teachers' College.
San Diego High School.

HARRIET E. MARTINES

MARTHA McCONNELL

MARY GLADYS McDOWELL, Phi Kappa Gamma
Teachers' College.
San Diego High School.
 Rowing '24; Tennis '26.

CLEONE J. MEYER
Teachers' College.
Parkers Prairie High School, Parkers Prairie, Minn.
 Jug Club '24, '25, '26; S. A. B. E. Club '25, '26.

MILDRED R. MORGAN

MARY MONTIEL

CAROL ELIZABETH MORGAN, Sigma Pi Theta
Teachers' College.
Brawley Union High School.
Tennis '25, Geography Club '26.

HELEN MORIARTY

IRMA LUCILLE MUELLER, Tau Zeta Rho
Teachers' College.
San Diego High School.
Jug Club '24, '25, '26; Geography Club '25, '26;
President Geography Club '26; Class Numeral '26;
Rowing '25, '26; Folk Dancing '25, '26; Hiking '25.

EVELYN LOUISE NANCARROW
Teachers' College.
East Side High School, Denver, Colorado.
Jug Club '25.

BETTY PEAIRS, Sigma Pi Theta
Teachers' College.
St. Francis, Kansas.

DOLORES RUTH PETERS





VIVIAN GALE POSEY

EMMA JANE ROBBINS

*Teachers' College.
Safford High School.
J. U. G. Club.*

GENEVIEVE ROBINSON

ZIPPORAH P. ROSENBLET

ANNETTE RUST

KATHRYN VIOLA RYAN

*Teachers' College.
Orange Union High School.
Basketball, Tennis, Hiking.*

MARIE ROEDEL SCHENCK

*Teachers' College.
Westminster College, New Wilmington, Pennsylvania.
"Golden Doom" '25; S. A. B. E. Club Treasurer '25;
Chairman Membership Committee S. A. B. E.
Club '26.*

VERNA MAE SHRYOCK

Teachers' College.

San Fernando Academy.

S. A. B. E. Club '25, '26; Alpha Mu Sigma '25, '26.

ADAH STIPP

GLADYS FREDERICK STONEMAN

Teachers' College.

Santa Ana Polytechnic High School.

Hiking '25, '26; Swimming '25; Rowing '25; J. U. G. Club

MRS. OLIVE H. TAYLOR

GENEVIEVE DOROTHY TEACHOUT

Teachers' College.

San Diego High School.

Treble Clef '24, '25, '26; Betty Morton in "Once in a Blue Moon" '24; College Cut Ups '24; Pirates of Penzance '25; Robin Hood '26; Geography Club '25, '26; Treasurer Geography Club '25, '26; Rowing '25, '26; Folk Dancing '25, '26; Feminine Frolics '26.

BETTY LENORE THOMAS

Teachers' College.

San Diego High School.

Assembly Program Committee '26; Two Masque '24, '25, '26; Heroine in "The Man In The Bowler Hat" '25.

NELABEL A. VEALL





MRS. HELEN HUBBELL
MRS. JUNE McBRIDE
DOROTHY OLIVER

MARGARET LOGAN REED
CHARLOTTE G. SMITH
LUCILLE HAZEL TAYLOR

MELUSINA VOGT

KATHRYN GLADYS WACKERMAN

Teachers' College.
Carlsbad-Oceanside Union High School.

ELIZABETH LUCILLE WAGNER, Shen Yo

Teachers' College.
San Diego High School.
Member Freshman Cabinet; Treasurer Two Masque
Players '25; President Two Masque Players '26;
Chairman Social Committee '26; Society Staff Aztec
'24, '25, '26; Graduate Gift Committee.

MAE WALKER

LYLA GENELLA WILSON, Sphinx

Teachers' College.
San Diego High School.
Freshman Dance Committee '24; A. W. S. Board '24,
'25, '26; D. O. M. '25; Sophomore Dance Committee
'26; Vice-President Sophomore Class '26.

MARY ELIZABETH YOUNG

Teachers' College.
Yuma Union High School, Yuma, Arizona.
J. U. G. Club '25, '26; "Golden Doom" '25; Rowing
'25; Tennis '25.

MRS. WILLIE B. BOWLES	DOROTHY LEMON
BLANCHE CRONKHITE	MARY LOUISE RANKIN
IONE FRITZ	LILLIAN MAY SIMMONS
MRS. REBECCA HENDON	MRS. HELENA THOMPSON
EVA PARSONS	MRS. D. S. VATNSDAL
MRS. LORETTA RUSSELL	HELEN M. WATKINS
MILDRED DEWEY	MRS. HESTER WHITELEY
ANNIE HANSEN	FRANCES EVELYN DAVIS
ANNA JOHNSON	GRACE DAVIS
MRS. MARIE LEITCH	LOIS E. LINKEY
MIRIAM M. LINDBERG	MARGARET BALSHAW

EARL ANDREEN, Epsilon Eta

Junior College.

Lake View High School, Chicago, Illinois.

Del Sudoeste '25, '25, '26; Advertising Manager '25; Two Masque Players '25, '24, '25; Mr. Ingoldsy in "The Trysting Place"; Kollege Kutups '22, '23, '24; College "5" Orchestra '23; Orchestra '22, '23, '25; President of Orchestra '22, '23; President of Alpha Mu Sigma '22, '23; Glee Club '23, '24, '25; Manager of "The Fire Prince"; Paper Lantern Staff '22, '23; "The Pirates of Penzance" '25; Assistant Manager Basket Ball '23; President Graduating Class '26.

MARIE AMOS BAIRD, Shen Yo

Junior College.

San Diego High School.

MARGARET BALSHAW

GILBERT BENTLEY

KENNETH MITCHELL CHIPMAN

Junior College.

San Diego Army and Navy Academy.

Football Varsity '24; Second team football '25; "The Freshman"; Varsity Baseball '26.

LEAVENWORTH COLBY

Junior College.

San Diego High School.

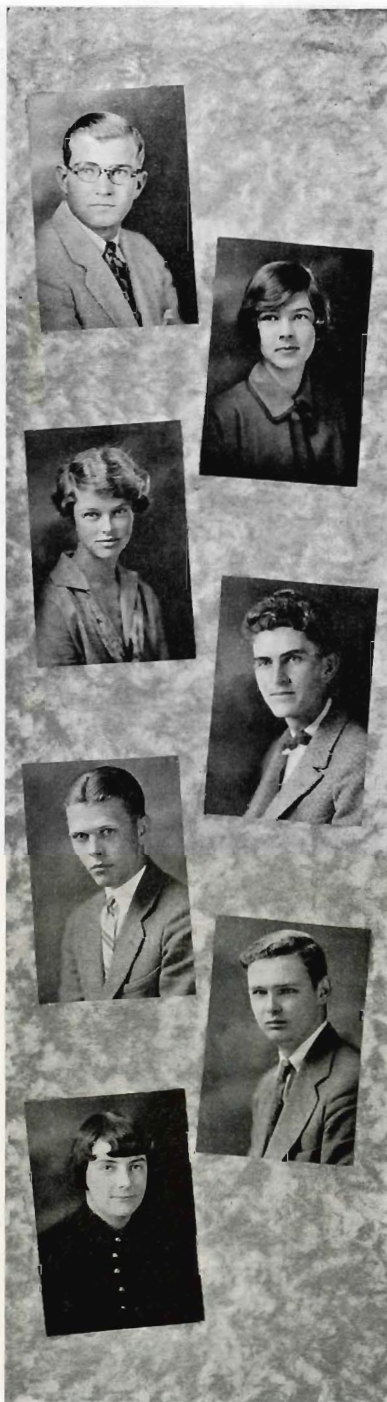
Editor Aztec '26.

KATHRYN JANE COZENS, Sigma Pi Theta

Junior College.

Oceanside High School.

Rowing '24, '25; Basketball '25, '26; Manager Volley Ball '25; Secretary Inter-Fraternity-Sorority Council '25, '26.





ALEXANDER LAWRENCE CROSBY

Junior College.

Sweetwater Union High School.

Track '25; Paper Lantern '25; College Y. M. C. A. '25; Student Forum '25; Executive Committee '26; Track '26; The Aztec '26; A. M. S. Board '26.

CATHERINE CROSE

VIRGINIA LEE ELLIOTT, Phi Sigma Nu

Junior College.

San Diego High School.

College Women's Y '25, '26; Property Manager of W. A. A. '26.

MARTHA FARNUM

EVELWYN FRANCES GORDON

Junior College.

San Diego High School.

EVELYN IRENE HARPER, Phi Sigma Nu

Junior College.

San Diego High School.

Frosh Women's Representative Executive Committee '24, '25; Assistant Secretary Associated Students '24, '25; Typist Paper Lantern '24, '25; Freshman Cabinet '24, '25; "Stuck-Up" to Asilomar '25; College Women's Y '24, '25, '26; Jug Club '24; Freshman Dance Committee '25; Rowing '24, '25; Volleyball '24, '25; Fencing '24; Hiking '24; Basketball '24, '26; Class baseball team '25; Second Team baseball '26; Tennis Championship '24, '25; Undergraduate Representative College Y '25, '26; Treasurer W. A. A. '25, '26; Secretary Sophomore Class '25, '26; Secretary Student Faculty Council '25, '26; Secretary Associated Students '24, '26.

FORREST L. HAWLEY

Junior College.

San Diego High School and Pomona College.

Football '24, '26; Track '25; Two Masque '25, '26; "Sir Wilfred Cates-Darby" in "The New York Idea" '25.

WALDEN HERRESHOFF

Junior College.

San Diego High School.

Women's Swimming Manager '25, '26; Tennis Manager '25, '26; Participant in tennis, rowing, swimming, horsebacking, volleyball '24, '25, '26; W. A. A. Letter and numeral, President of Women's Letter Society.

ROSALIND MAY HOGG

Junior College.

San Diego High School.

Treble Clef '24, '25, '26; Pirates of Penzance '25; Robin Hood '26.

ARTHUR JOSEPH JESSOP, Epsilon Eta

Junior College.

Coronado High School.

Inter-Frat Council '25, '26; Vice-President Inter-Frat Council '26; Rowing '25; Swimming '26; Second team basketball '26; Ad Club '26; Booster Club '26; Graduation Committee.

ELIZABETH KENNEDY JOHNSON

Junior College.

San Diego High School.

Jug Club '25, '26; Debating Team '24, '25, '26; Orchestra '25, '26.

DOROTHY JANE KELLAND

Junior College.

San Diego High School.

LEOLA LEAHY

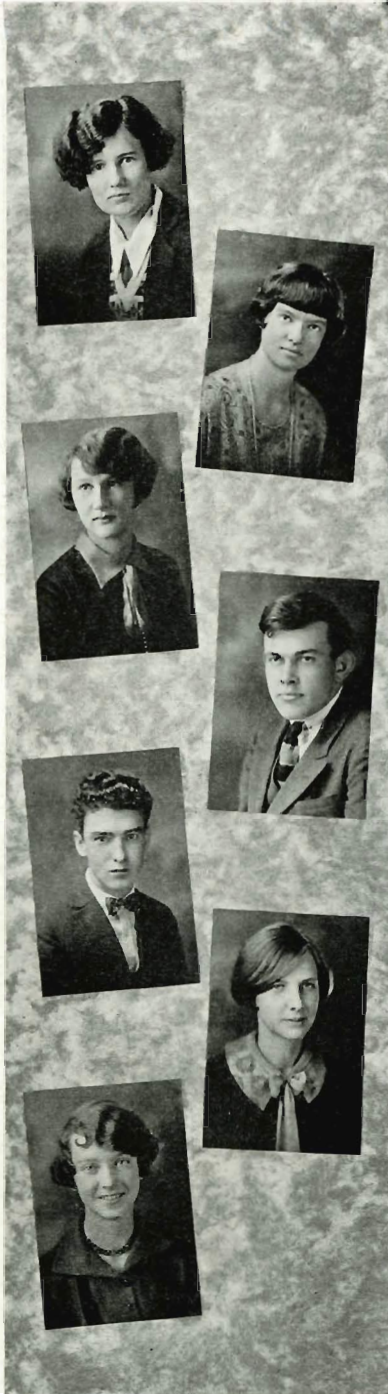
CECIL C. LLOYD, Epsilon Eta

Junior College.

San Diego High School.

Boxing '24, '25; Track '25, '26; Interfraternity Council '25; "The Freshman" '25; Acting Commissioner of Finance '25; Ad Club '26.





MARGARET McCONNELL, Sigma Pi Theta
Junior College.
San Diego High School.
 Treasurer of A. W. S. '24, '25, '26.

CARLOTA McCUTCHEN, Phi Sigma Nu
Junior College.
San Diego High School.
 Rowing '25, '26; Hiking Manager '25, '26; President
 College Women's Y '26.

CATHARINE McMILLAN
Junior College.
Wasco Union High School.
 Rowing '24, '25; Swimming '25; Tennis '26.

JOHN EARL MILBERY, Delta Kappa
Junior College.
San Diego High School.
 President of Delta Kappa '26.

BRITTAIN NICOL

ADA BLANCHE NISBET, Fra di Noi
Junior College.
Academy of Our Lady of Peace.
 Tennis '25, '26; Hiking '25; Baseball '25; Basketball
 '26; Manager of Horseback riding '26.

ZETA MARY O'CONNELL, Phi Kappa Gamma
Junior College.
San Diego High School.
 Treble Clef '25, '26; Treble Clef Quartet '25, '26.

JACK PARSONS

HARRIET MILDRED POLLOCK, Sphinx

Junior College.

San Diego High School.

Aztec '24; A. W. S. Board '25; D. O. M. '25; Two Masque Players '25, '26; Rally Committee '26; Inter-Fraternity Dance Committee '26; President A. W. S. '25; Treasurer Inter-Fraternity '26; Del Sudoeste '26; Sophomore Dance Committee '26.

JOHN SCHEVING

Junior College.

San Diego High School.

Inter-class track '25; Irish Marathon '26.

EDITH SCHOFIELD

Junior College.

San Diego High School.

Rowing '25, '26; Athletic Librarian '26.

BERNIECE MARIE STEELE, Komo

Junior College.

Greenfield High School, Iowa.

J. U. G. Club; Rowing '24; Swimming '25; Y. W. C. A. '25; Open Forum.

QUINTIN MAXWELL STEPHENS

Junior College.

Porterville Union High School.

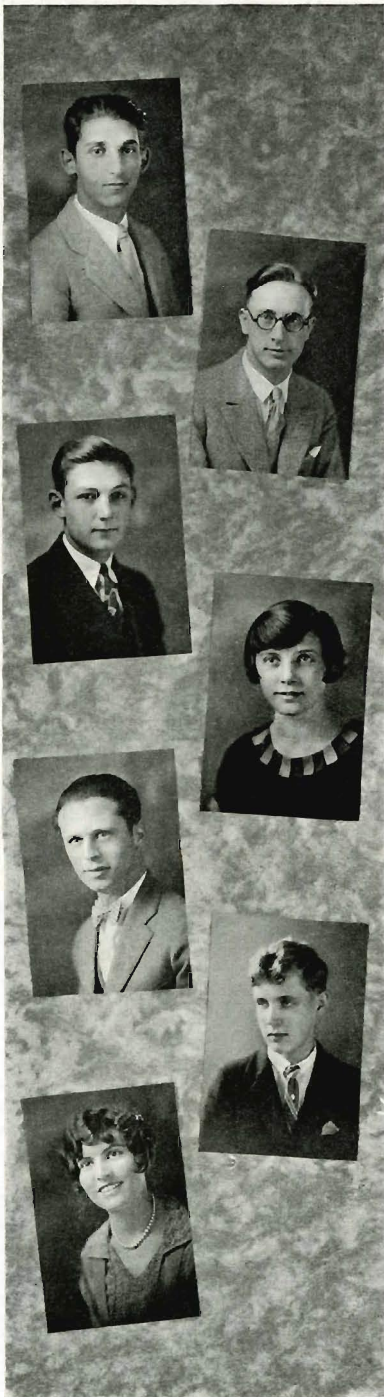
ANONA STINNET

Junior College.

San Diego High School.

Debate '24; Girls' Letter "S" Society '25, '26; J. U. G. '25, '26; President Student Forum '24, '25; College "Y" '24, '25, '26; Assistant Advertising Manager Del Sudoeste '26.





WILLIAM HORACE TAFT

Junior College.

San Diego High School.

Golden Quill '26; Aztec '26; Open Forum '26; Track Team '26; Assistant Boxing Manager '25.

GERALD B. THOMAS, Phi Lambda Xi

Junior College.

Long Beach Polytechnic High School.

Tennis Club '24; Men's Glee Club '24, '25, '26; Open Forum '25; Aztec Staff '25, '26; Paper Lantern Staff '25; Treasurer Men's Glee '25; Stage Force '26; Two Masque Players '25, '26; Singleader '25; "Trelawney of the Wells," "New York Idea," Harold Lloyd in "The Freshman," Pierrot in "Pierrot of the Minute," "Their Anniversary," "My Dear," "Robin Hood," "Pirates of Penzance."

CHARLES KINGSLEY TUTTLE

Junior College.

Grossmont Union High School.

Vice-President Graduating Class; Second Team Basketball '25, '26; Varsity Baseball '26; Two Masque Players '25, '26; Ad Club '26.

ARTHA ELIZABETH TYLER, Phi Sigma Nu

Junior College.

San Diego High School.

Court of Traditions '25; Freshman Representative, A. W. S. Board of Control '24, '25; Secretary of Freshman Class '24, '25; Delegate to I. W. A. Conference at Fresno '24; Social Chairman Y. W. C. A. '24, '25; Vice-President of A. W. S. '25, '26; Secretary-Treasurer of Y. W. C. A. '25, '26; Geography Club '25, '26; Chairman of Inter-Fraternity Dance Committee '26; Commencement Committee '26; Secretary-Treasurer of Graduation Class '26; Constitution Revision Committee '26; President of Inter-Sorority Council '26; Vice-President of Associated Students '25, '26; Annual Staff '26.

CORNELIUS G. ULLMAN

Junior College.

Heights High School, Cleveland Heights, Ohio.

Two Masque Players '25, '26; Men's Rowing '24, '25; Manager of Men's Rowing '25; Boxing '24, '25; Track '25; Glee Club '25, '26; Ad Club '26; Treasurer of Associated Students, Aztec Club.

EDWIN ARDEN WATKINS

Junior College.

Two Masque Players '23, '24, '25, '26; Glee Club '25, '26; Stage Force '26; "Little Journey" '26; "Russian Honeymoon" '26; Pirates of Penzance '25; "Robin Hood" '26.

MARJORIE JACKSON

SUSAN CURRY

GERTRUDE NELSON

PAUL MOTT

CLARENCE TERRY

SOPHOMORE CLASS

AS PEA-GREENS we envied the Sophomores, but now as Sophomores we find that the faculty still have us worried. Anticipation is surely greater than realization!

We have done our duty as good citizens this year by teaching the Freshmen their true status in the college—how to stand aside for upper classmen, and to regard their green caps as part of themselves.

Of course, the big event of our career was the Sophomore-Junior Hop. There are Hops and Hops, but this one surpassed them all. We gave a dance for the Freshmen, too—which affair conspired to make the youngsters look up to us with even greater reverence.

We have given the best of our spirit to State, and our members have distinguished themselves individually. We, like all others, have had our frolics, and our serious moments (such as when exams were on), but we will never forget the happy days and the friendships that have been formed.

Yes—we are proud of us, we Sophomores.



LORIS HOYT
LYLA WILSON
EVELYN HARPER
LESTER EARNEST

FRESHMAN B CLASS



WILLIAM MCCREERY
JANET HELDRING
MILDRED WILLIAMS
HORACE WARFIELD

THE CLASS OF 1927 began its noble and epochal career in September, 1925. We were not of much importance at first—we shy newcomers; nevertheless we were the center of much attention, especially from the Sophomores. Did we take our baths in the campus trash cans filled with water for the purpose? Can a fish swim? A fish cannot do anything else and get away with it, and neither could we. And, for awhile, every niche in the corridors held a hunk of suffering humanity that had neglected to obey the "Ten Demandments for Freshmen."

The Freshman Reception, however, made us take back everything we ever said against the Sophs, and later in the year we showed our appreciation by giving an unrivaled dance, which we believe the college will never forget.

We now being the heirs-apparent to the Sophomore Throne, and our color having changed from a verdant pea-green to a more chaste Nile-green, we await our next year with the earnest hope that we will finish our careers at State as well as we have started them.

FRESHMAN A CLASS

AFTER one semester of roaming the Aztec halls, we feel that we have at least lent something to the spirit that pervades the State College and its campus. Last semester we entered as Freshmen of the greenest hue, but five months have made us Staters to the last degree.

As a class our achievements are not many, but individual members have made up for this lack. Yet our combined efforts have not come to exactly naught. With the reception given us at the first of the semester by the Student Body, we launched into a series of activities, which ended with the memorable boat ride—the only one given during the year.

The biggest thing done during the year was the dance given at the State College in honor of the Sophomore class. The Women's Club room was decorated in purple and gold, and one of the biggest crowds to attend a school affair was present.

The boat ride on the 24th of April was distinctly a class affair. Nearly a hundred students were present. Dancing and food were enjoyed on the boat during the evening.

Besides these social affairs, the Freshman class won both inter-class baseball and inter-class track during the year. The officers of the group were the promoters of all the activities, and led the group through a year packed with success and achievement.

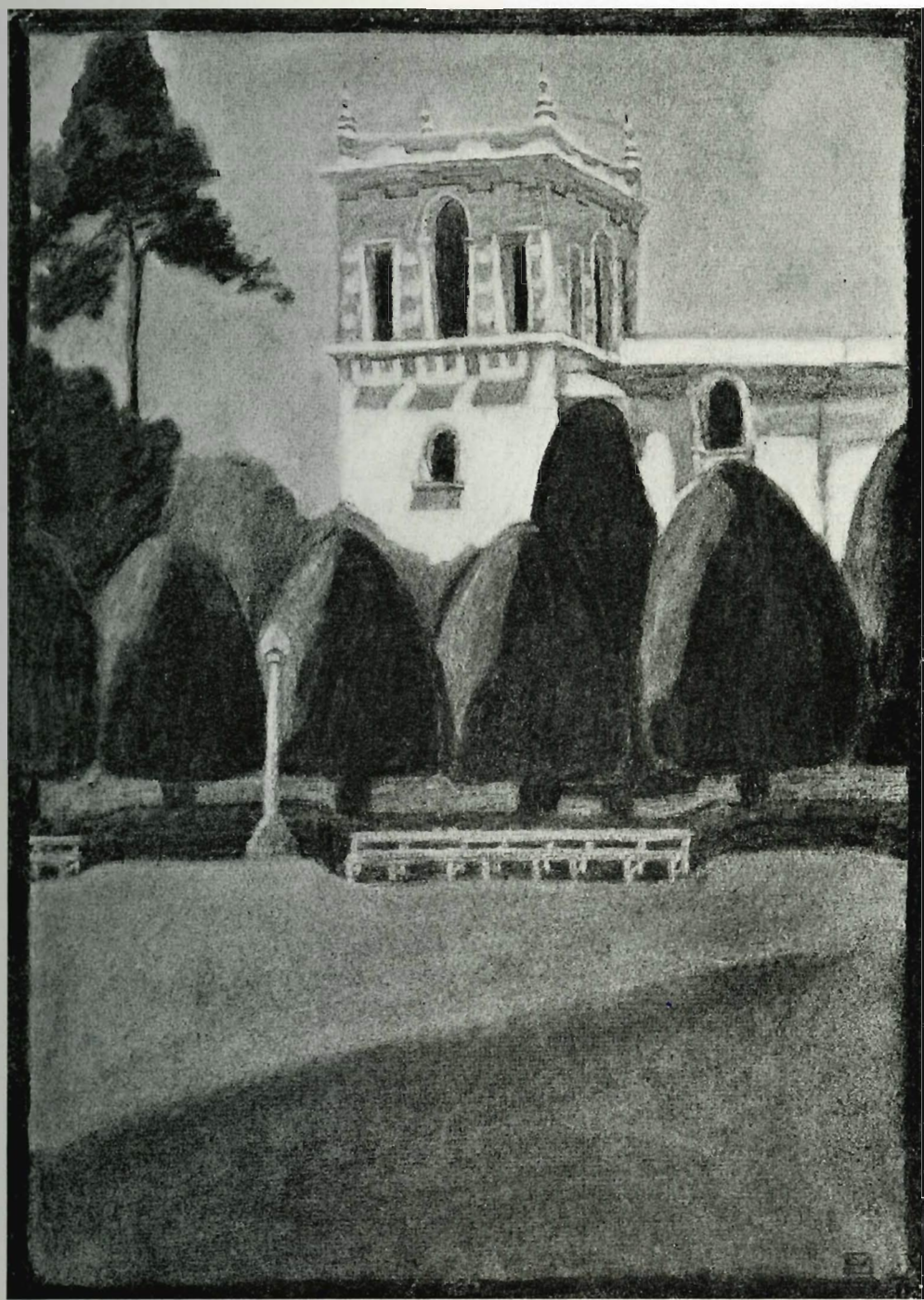


ROBERT HOLBROOKE
KATRINA LONG
ERATHUSA CHAMPLIN

Activities

“On the Plaza de Panama”

By Elsie Moriarty



ASSOCIATED STUDENTS

SAN DIEGO STATE COLLEGE

BARKHAM GARNER	<i>President</i>
ARTHA TYLER	<i>Vice-President</i>
EVELYN HARPER	<i>Secretary</i>
CORNELIUS ULLMAN	<i>Treasurer</i>
LESTER EARNEST	<i>Commissioner of Finance</i>
LORIS HOYT	<i>Commissioner of Athletics</i>
ALEXANDER CROSBY	<i>Men's Representative</i>
MARGARET GILES	<i>Women's Representative</i>
FRED BARTLETT	<i>Freshman Men's Representative</i>
RACHEL PARKER	<i>Freshman Women's Representative</i>

THE ASSOCIATED STUDENTS have been fortunate this year in having an Executive Committee that has safely steered the Aztec craft into the harbor of success.

The sea has been fairly calm, with only a few squalls, and at the end of the year we find ourselves making port with colors flying.

Finances for 1925-1926 stand more favorably than ever before at State College; another sport has been instituted; a new system of awards has been worked out; and, most important of all, the Student Body constitution has been revised to fit the needs of the present State College.

At the beginning of the year the financial situation was a little difficult, due to the resignation of Herbert Wilson as Commissioner of Finance. Cecil Lloyd was appointed to fill his position until a student body election could be held to determine a successor. Lester Earnest was elected, and has proved an excellent Commissioner. The Budget committee, composed of Lester Earnest, chairman, Dean Peterson and Cornelius Ullman, treasurer of the A. S. B., has so efficiently handled the money in their care that the students have been able to put out \$3,000 at interest besides paying for all financial obligations brought on by the different activities of the school.

Material as well as financial investments have been made by the students. A fine new desk with typewriter compartment has been purchased for the Ex-Committee Office, and with the other desk, already owned by the A. S. B., the students are well equipped to carry on their business. Besides this, two illuminated Aztec emblems have been bought, to be used for display at serpentines, games, entertainments, and school social affairs.

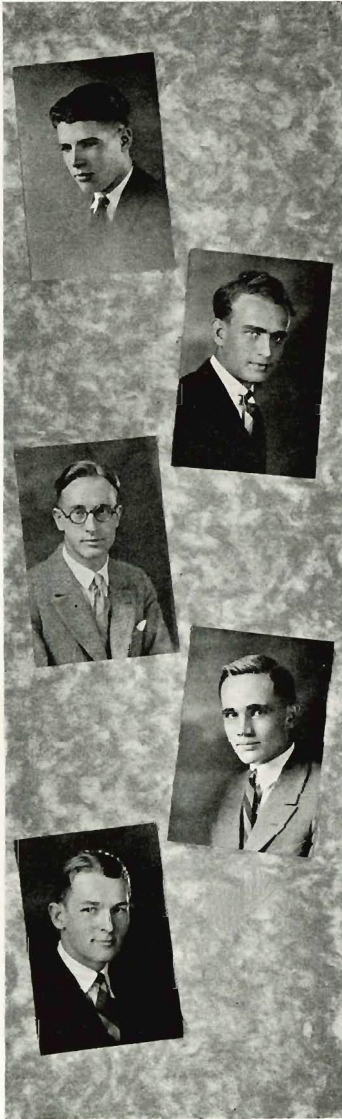
During the fall semester, considerable agitation was started for baseball as an Aztec sport. As a result, the A. S. B. installed it as a minor sport. The Ex-Committee feels that it has been repaid for the expenses of baseball, by the fact that the team has worked all during its season, improving in teamwork and skill, and finishing up the year by winning the last two games on the schedule.

Early in the second semester, an "awards committee" was appointed by the Ex-Committee to work out a new system of rewarding outstanding service to the school, in scholarship and extra-curricula activities. This committee has worked quietly, but steadfastly ever since appointment, and has succeeded in drawing up a workable system of awards that is very acceptable.

The greatest piece of constructive work accomplished by the A. S. B. this year, was the revision of its constitution. A Committee, selected from the members of the Ex-Committee, with President Barkham Garner as chairman, met for a number of weeks, and reorganized the old constitution which had been in use. The revisional committee went about its work with the idea of looking toward the future of San Diego State College.



ASSOCIATED MEN STUDENTS



DAVID BARNES	<i>President</i>
PAUL AVERY	<i>Vice-President</i>
LESTER EARNEST	<i>Secretary</i>
GERALD THOMAS	<i>Treasurer</i>
ALEXANDER CROSBY	<i>Board Member</i>
GEORGE DOTSON	<i>Board Member</i>
FRANCIS KNAPP	<i>Board Member</i>

TO THE Associated Men students goes the honor of awarding the first men's scholarship in college history. In accordance with a plan made last year, a fifty dollar sum was set aside for this purpose and used this spring. The board of control granted the scholarship to Harold Torbert, a pre-medical student who has made high grades in his work at State College.

Following the precedent set last spring, gold medals were presented to all track men who bettered college records in track and field events. The eight men who received medals were Guy Fox, Maurice Fox, Oliver Worden, William Powell, Alexander Crosby, Paul Mott, Raymond Genet, and Kenneth Johnson.

The banquet given in the first semester to men prominent in San Diego's civic life, as a means of interesting these citizens in the welfare of the college, was made possible through funds contributed by the Associated Men students.

ASSOCIATED WOMEN STUDENTS

HARRIETT POLLOCK	<i>President</i>
ARTHA TYLER	<i>Vice-President</i>
HAZEL WOODS	<i>Secretary</i>
MARGARET MCCONNELL	<i>Treasurer</i>
ADA ARNOLD	<i>Freshman Representative</i>
LYLA WILSON	<i>Social Chairman</i>
JANET HELDRING	<i>Program Chairman</i>
KATHRYN COLE	<i>House Chairman</i>

A N ORGANIZATION whose purpose is to promote co-operation and good will among the students may always expect to prosper. Such is the aim of the Associated Women Students, an organization of which every woman of the student is automatically a member.

A scholarship of fifty dollars was granted by the A. W. S. in both semesters, and a loan fund has been established. Any woman may take advantage of this fund, and results show that it has been a great help.

An important step forward taken by the A. W. S. this year was the revision of its constitution, so that it is now up-to-date and usable by the present organization. At the beginning of the second semester, the A. W. S. instituted a card index system, which has proved useful.

A welcome tea was given at the beginning of the year, and proved a great help in acquainting the new students with the others. The crowning event of the first semester was the annual Feminine Frolic held in the Club Room.

In November the Pomona College A. W. S. acted as hostess to delegates from the colleges of Southern California. Misses Marian Peek, Harriet Pollock, Hazel Woods, Katherine Sample and Kathryn Cole were the official delegates from San Diego. After returning from Pomona, the annual Echo Banquet was held, reproducing the conference experiences.

Finishing the year in the active way it started out, the A. W. S. gave the "Collegiate Carry On" Banquet in April, honoring the clubwomen of the city. Its purpose was to acquaint the San Diego women with the college and its activities. In May, a very successful beach party was given by the A. W. S. at Mission Beach.





AZTEC STAFF

THE COLLEGE PAPER started the present school year with a new name and several new policies, which have furthered its aim to boost student activities, to be truly representative, and to encourage all things that foster State College spirit. Perhaps the most well-received of the new ideas has been the column headed "St. James and the Coco Tree," which has become a popular and spirited medium through which student opinion on matters of national, international, local and college interest have been expressed.

The staff has been ably led by Leavenworth Colby, who brought to the paper many new ideas. The rest of the staff included: David Barnes, associate editor; Horace Taft, and Alexander Crosby, news editors; Don Brand, sport editor; Isabelle Farnum, society editor; Frank Dodson, Carl Johnson, Don Keller, departmental assistants. The news staff consisted of: Margaret Balshaw, Hazel Woods, Adah Fletcher, Cynthia Stanton, Doris Lanning, Imogene Loper, Jack Evans, Alyce Foster, Beatrice Bankerd, Harry Roche, Elizabeth Dennis, Charles Bennett, Lynn Drebert, Frank Keyes, Catherine Hayes. The typists were Berniece Steel, and Alice Sutherland. On the business end of the paper were: Francis Knapp, manager; Harry Roche, business assistant; and Paul Farrar and Tom Neuman, circulation managers.



DEBATE

THE OPENING EVENT of the season was the inter-class conflict between the Sophomores and the Juniors. After an exceedingly close contest the second-year team received the decision, 2-1.

Debate manager Ervin Hartke arranged two inter-collegiate debates, the first with Redlands University, the second with the College of Pacific. Elizabeth Johnson and Joseph Colton were chosen to uphold the negative for State College against Redlands University, on the question: "Resolved, that the constitution of the United States should be so amended as to give congress power over child labor legislation." Although our team worked long and arduously, it was defeated 3-0.

Following this contest was the difficult debate with the College of Pacific. La Vange Hunt and John Cranston upheld the negative for State on the question: "Resolved, that the military forces of the United States should be placed under the direction of a single cabinet officer with separate sub-departments for the land, naval, and air forces." After a hard battle our team was again defeated at the hands of a northern college by a 2-1 vote of the judges.

About sixteen State college students entered the first annual oratorical contest which was sponsored by the Student-Faculty Council. Awards were given by the Associated Students to those winning first, second and third places. A perpetual trophy was given to the winner by the faculty.



RICHARD JOHNSON
HUGH GILLIS
CLARK WALLIHAN

RAYMOND GENET
LOWELL TELLER

MR. LIVINGSTON
LESTER EARNEST
RALPH SMALL

ALEXANDER CROSBY
HAROLD BUTZINE
RICHMOND BARBOUR

ROY HAWEKOTTE

LORIS HOYT
ROSS WHITE
ED RANDEL
ROBERT BARBOUR
LOREN CAMPBELL

FRANCIS KNAPP

EUGENE SHEPHERD

JOHN COLQUHOUN

WOMEN'S ATHLETIC ASSOCIATION

PROOF of the advance of the Women's Athletic Association is the establishment and success this year of two new sports, horseback riding and folk dancing.

Approved by the W. A. A. board, horseback riding is now participated in by faculty members as well as students.

Under the leadership of Dr. Georgia Coy, a folk dancing class has met weekly and studied the folk dances of several nations. An exhibition of some of the more attractive steps was given before the women students at the Feminine Frolic.

Credit for the success of these new activities and all the established seasonal sports goes to the W. A. A. board, consisting of Margaret Giles, president; Sue Wolfer, vice-president; Elizabeth Dennis, secretary; Evelyn Harper, treasurer, and to Miss Jessie R Tanner, faculty advisor.

The four main events of the women's athletic year included the W. A. A. tea, dedication of the new tennis courts, the Spring conferences, and annual rowing inspection day.

For the annual tea a special committee composed of Betty Dahlfues, Margaret Boegeman, Gladys Hitt, Mildred Begley, Mary Atkinson, and Iva Copple, was appointed. "Evolution of Women's Sports," a clever pantomime accompanied by an original reading, was the chief attraction of the afternoon.

The board secured Edgar Johnston, vice-principal of the San Diego High school, for the dedication of the new tennis courts. He gave a talk on the development of tennis in San Diego, which was followed by several fast tennis matches.

Margaret Giles, 1926 president, and Sue Wolfer, president elect, were delegates to the sectional Athletic Conference of American College Women at Pullman, Washington, April 15, 16, and 17. They represented State College on the question, "Methods of extending competition during a sport season beyond class competition."

Skill rather than speed was emphasized at the annual rowing inspection day, first week in June, which gave evidence of the successful coaching of A. L. Seelig. During the year, captains had assumed the duties of coxswain; but on inspection day, Coach Seelig took command, giving all the crews an equal opportunity.

Growth of interest in all the forms of women's athletics is evidenced by the number of awards won this year by faculty members and students. About twenty-five letters and fifty numerals were presented by the student body. Looking forward to "State's" development into a four-year institution, a higher award has been planned, which will require continuous participation in sports all four years.



MISS JESSIE TANNER
MARGARET GILES
SUE WOLFER
ELIZABETH DENNIS
EVELYN HARPER



SABE CLUB

NOEL LAPHAM	<i>President</i>
WEIDLER MUSSELMAN, JR.	<i>Vice-President</i>
GILBERT JUDY	<i>Treasurer</i>
EMILY KELLY	<i>Secretary</i>
MARIE SCHENCK	<i>Chairman of Membership</i>

IN THE SPRING of 1925, the S. A. B. E. Club was organized for the purpose of promoting the social and educational activities of the group of mature and experienced students at State College, and to further in every way possible the best interests of the College. This club has grown and prospered since its organization, and at the present time has a total membership of almost one hundred.

Aside from lively initiation of new members at the beginning of each semester, the S. A. B. E. has given a number of social affairs of interest. A Hallowe'en party was held at Shirley Cottage, Mission Beach; Mrs. Lena P. Crouse and Mrs. Gertrude Bell acted as hostesses at a reception held in the Women's Club Room; Miss Amsden and Mrs. Crouse presented an act at "Feminine Frolics," and several informal parties and dances have been given in the homes of the members.

Such an organization as the "Sabe" Club has an important place in the college life, giving a means of stimulating interest in extra-curricula activities on the part of those students who ordinarily might not take part in the non-scholastic activities on the campus.

Alumni members are welcomed at the social affairs of the club. This custom will help to make the influence of the S. A. B. E. felt even after students have left the college, and will keep the interests of State in the minds of the members when they have gone on into other groups and into otherfields of work.



ART CLUB

THE ART CLUB was formed in the late fall of last year by some fifteen members from different art classes. It was organized for the purpose of bringing together those who were interested in furthering activities in applied arts. It was decided to have a monthly club supper, to be followed by a lecture by some prominent artist or a social hour for the members.

This club was constitutionally organized, with faculty members, soon after its first meeting. The club proved very popular, and grew so rapidly that a new constitution governing membership and a larger organization was found to be necessary.

Groups have been formed and organized into the following departments: Crafts, poster and cartooning, stage craft, and general art study. The crafts group has been divided into a leather section, a batik and dyeing section. The former has made several interesting articles, including purses, key ring holders, and bill folds. An exhibit of this division was placed in the library show cases. In the batik and block work some attractive scarfs and ties were made which were also exhibited. The results of the poster section have been seen in the halls in the form of general advertisements for school activities. Results of the stage craft activities have been seen in the settings and costumes of some of the college plays.

The Art Club, which is one of the youngest organizations at State College, has proved that there is a place for such an organization. It looks forward to continuing as a vital part of college life.

GEOGRAPHY CLUB



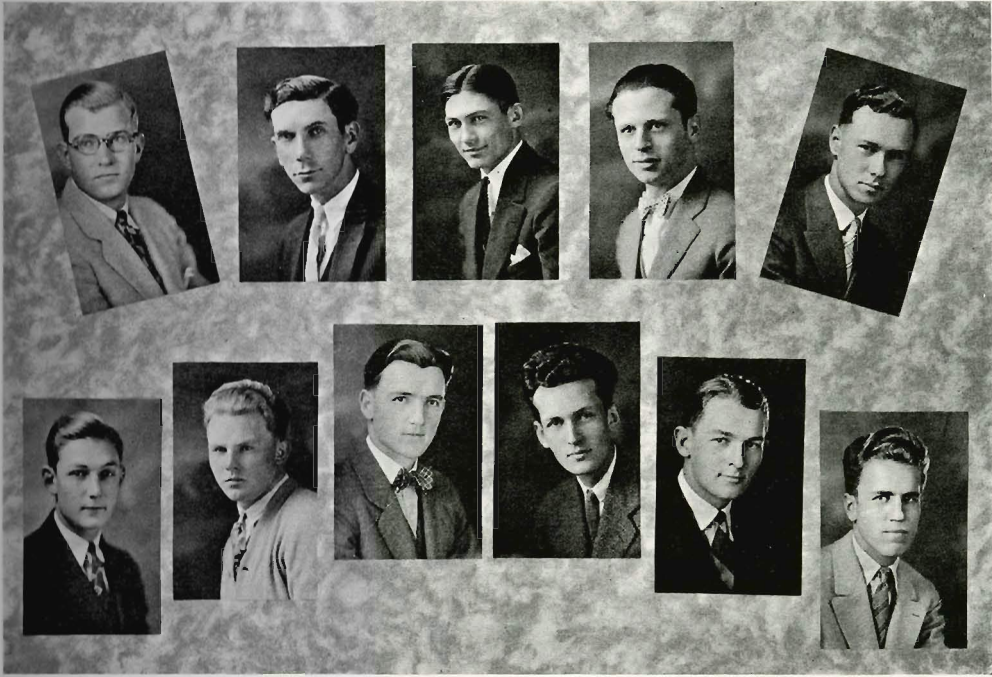
IRMA MUELLER
CARMETTA HARRIS
GENEVIEVE TEACHOUT
LOUISE EDELBROCK

AT THE close of this school year, the Geography club has concluded another successful season. Started two years ago for the purpose of promoting an interest in geography through a social group, the organization has grown to a large membership of students, and has carried on its activities this year in true Aztec style.

There are three traditions that the club has established and adhered to since its organization. The first is the progressive dinner, held in the fall semester, and a trip during the year that will provide the members with some new knowledge of geography as well as give them a good time. Last year the group journeyed to Ensenada, and this spring they went to Imperial Valley.

Every year, the group indulges in a maple sugar party. The affair is regarded as quite a novelty, especially to those who have never lived in the northwestern woods. The club meets twice a month; once in the afternoon in the Women's club room, and once at the home of some member.

Much of the success of the club is due to Miss Clark, faculty advisor, and the officers: Irma Mueller, Carmetta Harris, Gertrude Coulthurst, Genevieve Teachout, Lucile Eckles and Louise Edelbrock.



EARL ANDREEN CHARLES BENNETT ERVIN HARTKE CORNELIUS ULLMAN JOHN RUMSEY
KINGSLEY TUTTLE HOWARD BULLEN LESTER PENRY PAUL PFAFF FRANCIS KNAPP ED RANDEL

JUNIOR AD CLUB

THE YOUNGEST of the organizations at State College is the Junior Ad Club, started in March, 1926. This club was organized after the need was apparent for an organization for commerce students, and is now affiliated with the San Diego Ad Club, a unit in a world-wide organization as a junior chapter. Its purpose is to promote among the men of the college a better knowledge of business methods and of the business world, and to secure a closer contact with the business men of San Diego.

At the weekly noon luncheons, qualified speakers present certain phases of business and commercial work, carrying on their discussions in the same way as do the luncheon clubs of the city. The club program is planned so that a variety of business interests are presented. One important aim, in this sort of contact with San Diego business men, is to create a cooperative spirit in promoting worthwhile publicity for San Diego State College.

One of the most constructive committees of the club is the Vocational Placement Committee. The work of this group is to find positions in San Diego business houses for the members of the club, and other men of the college who desire them. Francis Knapp has acted as chairman of this committee and has achieved admirable results.

The club started with twelve charter members, who chose as their officers and board of directors: Charles Bennett, president; Lester Penry, vice-president, who has also acted as membership chairman; Ervin Hartke, secretary-treasurer; Cornelius Ullman and Francis Knapp, who have supervised the program and vocation placement committee, respectively. Mr. Wright has acted as faculty advisor for the new organization.

The Junior Ad Club has won the respect of the State College for starting an organization with a high purpose, and for carrying out that purpose in a commendable way. It shows the spirit of progress toward a better State College.

DRAMA

DRAMA has always fascinated State College students, but this year, due to the fact that it has been better organized than ever before, a most successful year with many performances has been the result.

Much of the honor is due to Sybil Eliza Jones, director of dramatics. Following the plan of the Harvard Workshop, she divided the Drama Production Class into two companies, each of which chose plays, and rehearsed and produced them under student directors, art directors, and stage managers. During the first part of the year, several one-act plays were given in assembly and before various civic organizations of San Diego, thus increasing public interest in State College dramatics. These included "Spring," "The Fascinating Mr. Denby," "Getting Off," "The Merideths Entertain" and "Home for Genius." The last was written by Miss Jones. The Drama class celebrated national drama week by an evening of one-act plays, and dancing afterward, at the San Diego Woman's club. About 300 guests were invited, including college students, faculty members, friends of drama class members, and others interested in drama. The plays given were "Princess Kiku," a Japanese fantasy in six scenes, for which the costumes, wigs and scenery were made by members of the cast; and "Ashes of Roses," a play written in poetic form and beautifully staged and costumed in the period of Louis XV.

With the beginning of the second semester, the drama class eagerly began to search for a three-act comedy to be given as the Spring play. "A Little Journey," by Rachel Crothers, was chosen, and successfully given. Most of the action took place in a railway coach, the set for which was designed by the stage craft class under the direction of the Art Director, Elsie Moriarty. "A Little Journey" contained its serious moments as well as rollicking comedy, and included a thrilling train wreck. The characters were all unusually strong parts and were well portrayed. The leads were taken by Alyce Foster as "Julie," the well-bred, sympathetic Eastern girl; Paul Pfaff as "Jim," the kindly young western rancher, and Cynthia Stanton as "Annie," the hopeless little mother who was killed in the wreck. The rest of the cast included "Lily," Fannie Freed; "Frank," Ted Lanning; "Charles," Hugh Gillis; "Smith," Spencer Rogers; "Leo," Bob Foster; "Mrs. Bay," Rosalie Moore; "Mrs. Welch," Ada Garfield; "Ethel," Mildred Williams; "Kitty," Pauline Connable; "Conductor," Edwin Watkins; and "Porter," Terence Geddis.

Feeling that the drama students should have experience in other schools of acting besides American or English, Miss Jones also cast a three-act Russian play, which was given during the spring at the Yorick Theatre. The leading parts were taken by Virginia Wenrich, who portrayed the countess, "Poleska," a disdainful little spitfire; and Spencer Rogers, the count who disguised himself as a peasant in order to tame his fiery wife. "Micheline," the pretty, flirtatious little country miss was portrayed by Janet Heldring.



"NEW YORK IDEA"



"A LITTLE JOURNEY"

TWO MASQUE PLAYERS



L. HUNT
B. WAGNER
M. AYRES
C. STANTON

THE TWO MASQUE PLAYERS is a dramatic organization of State College, whose membership is open only by tryouts held at the beginning of each semester, and whose purpose is to produce during the year one three-act play, and several one-acts.

The major production this year, "The New York Idea," a four-act play, was given in October at the Roosevelt Auditorium. The play, a racy comedy, showing the modern sophisticated views on marriage and divorce, was somewhat difficult for a college cast to undertake, but was very creditably produced under the direction of Miss Sybil Eliza Jones. Sue Wolfer and Terrence Geddes took the leads of "Cynthia" and her ex-husband "Jack." Others in the cast were: Cornelius Ullman, Wright McConnell, Jerry Mulvey, Alyce Foster, Terry Havens, Cynthia Stanton, La Vange Hunt and Clarence Terry. The stage settings were designed by Margaret Ayres.

As another phase of their dramatic work the "Two Masque Players" organized a regular weekly class meeting. Only those who had had a year of college dramatic work were eligible. The one-act plays, which were produced under the direction of Miss Jones, were: "Addio," a tragedy by Stark Young; "The Charming Young Man," a comedy offering every member an opportunity for work; "Pierrot of the Minute," a fantasy, and "One Hot Day," a clever two-act comedy.

The one-act plays were given at the Florence School auditorium the first of June and made a highly interesting invitational dramatic evening. The Two Masquers have the reputation of having the finest dramatic ability in school, and the plays which they have produced show this to be true.

Several plays were in process of presentation when the book went to press, but as yet it is uncertain just when they will be given and for whom. "A Hot Day," the clever two-act play will probably be given before the end of the year for a social function.

ALPHA MU SIGMA

JUNE, 1926, marks the close of Alpha Mu Sigma's most successful year. Boundless enthusiasm, splendid co-operation, excellent material and plain Yankee determination have won a name for the combined glee clubs in and around San Diego.

Growing popularity of Alpha Mu Sigma performances necessitated singing at the Roosevelt Auditorium at Christmas time. Santa's only rival, "State's" Christmas gift to the public, was the finest token of its kind ever offered by Aztecs.

An equally rousing manifestation of the seasonal spirit was shown by a voluntary group of glee men and women when they forsook bed, parents—yea, even breakfast—to carol for their friends Christmas morning. But their valor was rewarded, for at the end of the journey, Miss Deborah Smith and Miss Edith Hammack greeted them with hot coffee and doughnuts.

The second outstanding point of interest sent the clubs on a tour to Sweetwater, Grossmont, and Coronado High Schools. A later trip was taken to San Diego and La Jolla "Highs."

Finally the opera, from which and to which everything musical is dated, was presented at the San Diego High School Auditorium, May 28. Affording rich opportunity for dramatic and musical attainment, "Robin Hood" was a decided success from the standpoint of both chorus and principal work. Following the precedent of many other colleges, State made an innovation and invited a faculty member to participate.

Three entire assembly programs were given before the student body; two of which were contributed by the combined clubs, and one by the Men's Glee. An original medley by Treble Clef, given first as an act at the Feminine Frolic, was repeated as a feature of a "nonsense program."

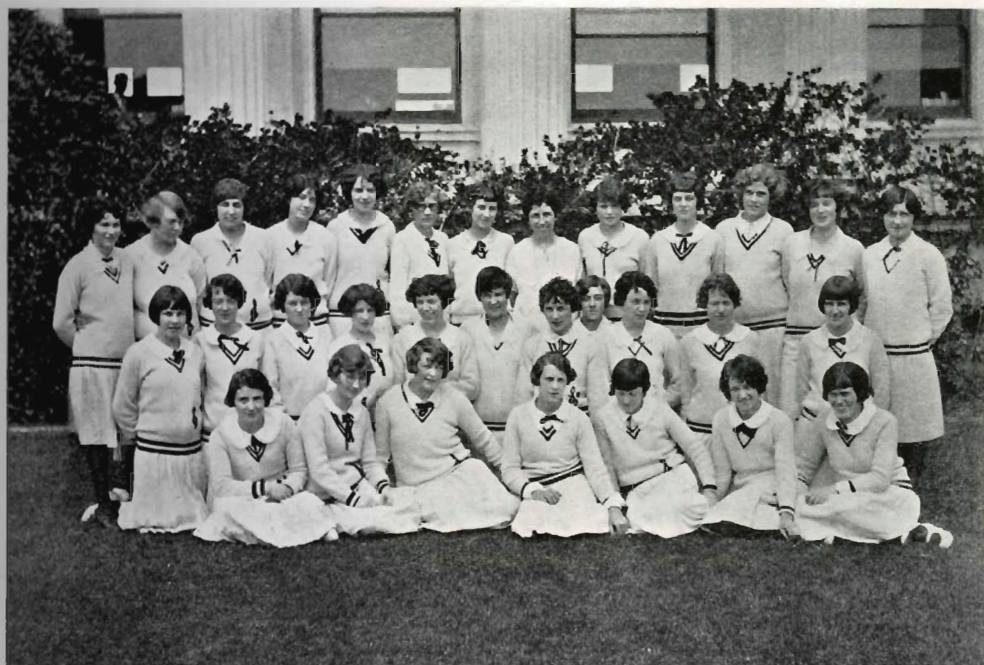
Two sacred programs were presented at local churches by the ensemble glees. The first, at the First M. E. Church, aided in establishing a traditional college night. Mildred Kay, soprano, creditably carried the solo part. At the Mission Hills Congregational church, the evening's entertainment included solos by Mildred Kay and Emmett Coover, and cello selections by Ross White.

Treble Clef achievements include trips to the San Diego Business and Professional Women's clubs, Navy Hospital, Army and Navy Academy. Many other invitations the latter part of the year were necessarily refused, owing to the limited time in preparation for "Robin Hood."

Quartette engagements have been far more numerous. The women's quartette consisting of Zeta O'Connell, Dorothy Hall, Iva Copple and Fanny Lydick, accompanied by Mildred Menefee, sang before several clubs and churches—San Diego Club, Federation of Women's Clubs, Mission Hills Congregational and First Congregational churches. Members of the Men's quartette; Ward Cash, Ed Randall, Lester Earnest and James Fulton, appeared before Kiwanis, Engineers, Ad and Masonic luncheons and meetings, as well as furnishing the music for two college assemblies.



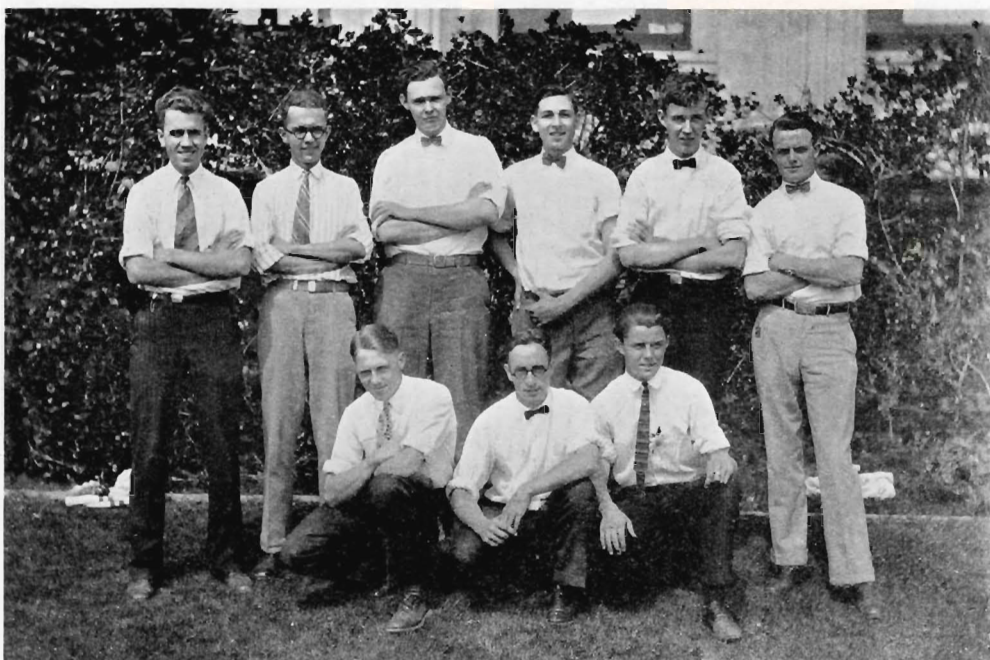
ALPHA MU SIGMA QUARTETS AND OFFICERS



TREBLE CLEFF



MEN'S GLEE



STAGE FORCE

THE COURSE in Stage Craft given by Miss Benton made a strong appeal to those interested in the artistic or producing side of the theatre.

During the first quarter individual and class work was done in designing stage settings, understanding and experimenting with the psychology of color in stage productions, and research work for various stage problems.

The real constructive work was begun by making a model miniature stage, to replace the individual box sets used by former classes. The completely equipped stage with foot-lights, border lights, effect lighting apparatus, exterior sets, cycloramas, Craig screens, Sam Hume sets, etc., could be successfully used to experiment with scenic design and lighting before the construction of the large sets for college productions was attempted.

Working in collaboration with members of the drama class, the difficult settings for "A Little Journey" were made. Many new ideas in modern staging were used with interesting effects. All of the scenery for the Alpha Mu Sigma operetta "Robin Hood" was also made by the stage-craft class.

Credit must be given to the volunteer stage forces which functioned during the fall semester. Lighting and scene designing and shifting, were done thru their efforts in "The New York Idea," the one-act plays in assemblies, and the drama class evening of plays. These volunteer workers were Leavenworth Colby, Loris Hoyt, Margaret Ayres, Terry Havens, Jerry Thomas, Cynthia Stanton and Roy Hawekotte.



ORCHESTRA

AT THE first Student-Faculty Council meeting of the year, it was decided that the State College needed an orchestra. So with the usual despatch the students set about to organize one, and at the beginning of the second semester real work was begun.

Mr. Dudley Nashold was engaged as director. He is a prominent director in San Diego, being well known as the head of the Band Department of the San Diego Schools. With a background of personal experience in orchestra and band work, he is well qualified to direct our orchestra.

This new organization took over the big task of playing the music for "Robin Hood," the Alpha Mu Sigma spring production, and proved itself very successful. It was a really big thing for a new orchestra to attempt, and the whole college feels that they have made a name for themselves, as well as establishing a permanent activity for the Aztecs to profit by.

College students who are members of the orchestra are: Marjorie Critcher, Emma Andrews, La Rue Fry, Burnice Law, Gwendolyn Davis, Edith Schofield, Miriam Tuley, Louise Strehlke, Janet Slattery, Alice Sutherland, Andrew Gallant, James Fulton, Dick Barbour, Guy Jorden, Truman Haus, Bob Barbour, Fenel Wallen, Richard Maxwell, and Parker Lipsey.

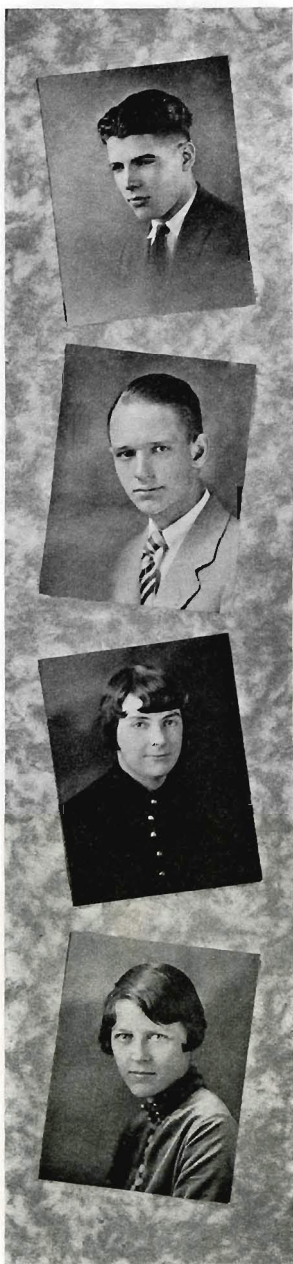
Fraternal Organizations

Palm Fountain

By Elsie Moriarty



INTER-FRATERNITY COUNCIL



DAVID BARNES
ARTHUR JESSOP
CATHERINE COZENS
MARGARET AYRES

ORGANIZED October 10th, 1924, with the purpose of boosting a high scholarship standard among the members, and of co-operating with the faculty in all matters furthering the best interest of the college, the Inter-Fraternity Council has continued on its third year of existence with increasing success.

An organization within the Inter-Fraternity Council is the Inter-Sorority Council, which has regulated the rushing season and the method of bidding.

Membership is open to only those fraternal organizations which are duly recognized by the college faculty, and include: Epsilon Eta, Eta Omega Delta, and Phi Lambda Xi fraternities; and Sphinx, Shen Yo, Sigma Pi Theta, Gamma Phi Zeta, Tau Zeta Rho, Phi Sigma Nu, Phi Kappa Gamma, Fra Di Noi and Komo sororities.

As a part of their general service to the college, the Council has partly paid for the jazz orchestra which has furnished the music for the noon dances. The second annual Inter-Frat dance was held in January at the new Rho Delta Auditorium, and was the most brilliant of all the dances given by the college this year.

INTER-SORORITY COUNCIL

THE INTER-SORORITY COUNCIL is a body composed of two delegates from each of the nine State College sororities, which include: Sphinx, Shen Yo, Sigma Pi Theta, Gamma Phi Zeta, Tau Zeta Rho, Phi Sigma Nu, Komo, Phi Kappa Gamma and Fra Di Noi. It functions to decide matters of like interest to the sororities, and to enforce uniform regulations concerning rushing and bidding.

Rules for rushing seasons were formulated by this group and were quite strictly adhered to throughout the year. San Diego being of smaller size than many northern institutions, rules were not made so complicated. However, their merit is emphasized by the smooth way in which the "rushing season" (at best a heated time) went along.

As a general service to the women of the college, the council has taken over the care of the women's rest-room, the pledges of the respective sororities officiating one week each quarter.

The officers for the spring semester were: Artha Tyler, president; Margaret Essert McClure, vice-president; and Janet Heldring, secretary.



ARTHA TYLER
MARGARET E. McCLURE
JANET HELDRING



DELTA KAPPA

Organized Oct. 2, 1922

Fratres in Facultate

DR. LEO F. PIERCE
WALLACE A. GILKEY

Fratres in Urbe

ELLIS PRICE
GARDNER HART
DEE HARWOOD
HENRY FRANCES
HUGH SKILLING

ARTHUR LORING
TOM AYRES
WALTER HENDERSON
DUANE CARNES

ROBERT HEE
LOILER SNYDER
SAM SLUTSK
JAY STAFFORD
HERBERT HENTON

Memoriam

HENRY LAUBMEYER

Fratres in Collegio

CLASS OF 1927

PAUL WEINSTOCK

CLARENCE WHITE

GEORGE PARSONS

CLASS OF 1928

CARL ESENOFF
LOREN CAMPBELL
JOHN MILBURY
LYNN DREBERT

EUGENE SHEPHERD
THOMAS NEWMAN
HAROLD TORBERT

HAROLD BUTZINE
JOHN THOMAS
JOHN COLQUOHOUN
DONALD MILNER

CLASS OF 1929

TED JAIN
STANLEY ANDREWS

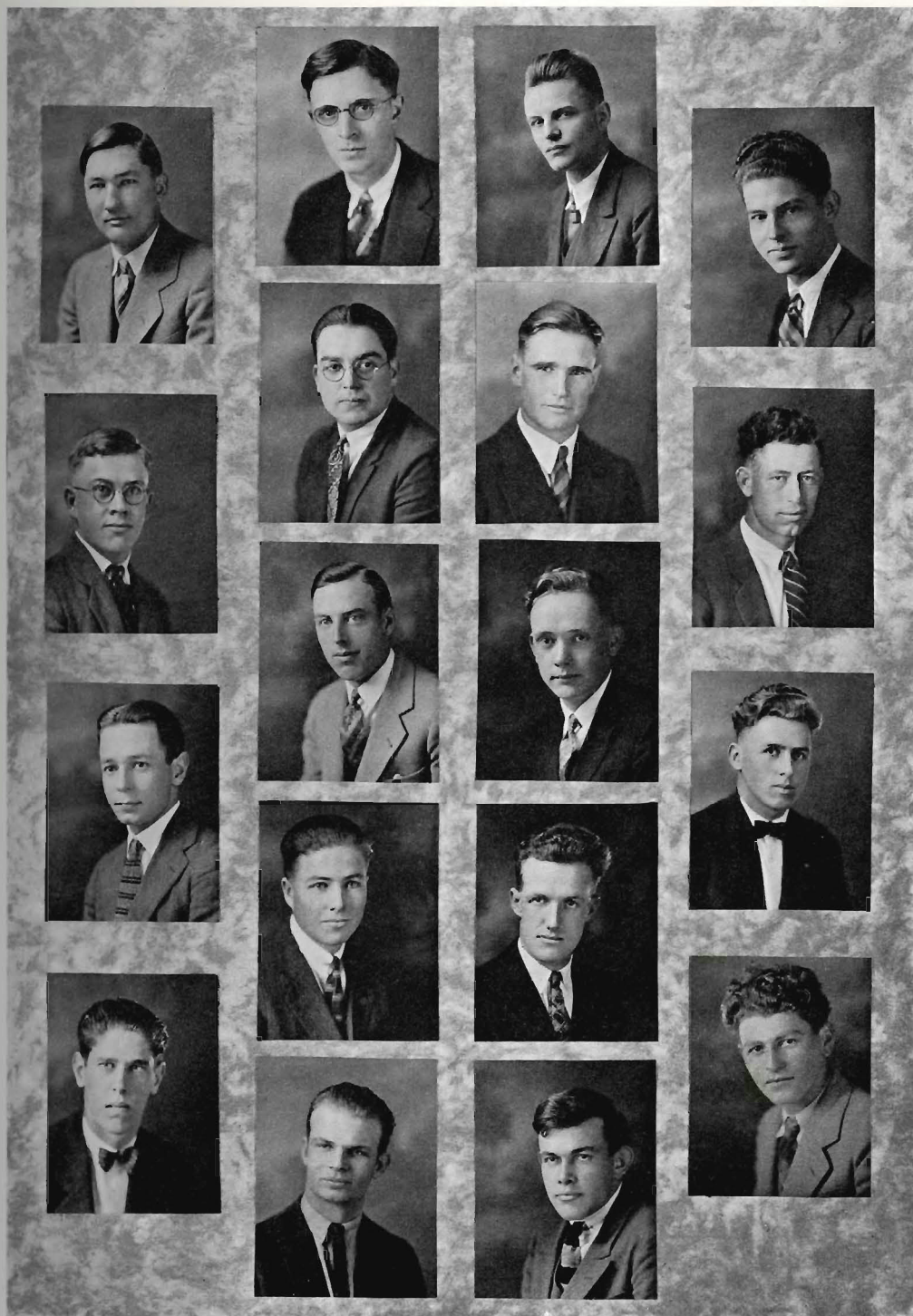
HARRY HAELSIG

GEORGE TELFORD
LLOYD STONE

CLASS OF 1930

ROBERT RHONER

JOHN BURCHARD



GEORGE PARSONS
CLARENCE WHITE
PAUL WEINSTOCK
JOHN BURCHARD

DR. L. F. PIERCE
LLOYD STONE
JOHN COLQUHOUN
STANLEY ANDREWS
EUGENE SHEPHERD

MR. WALLACE A. GILKEY
GEORGE TELFORD
JOHN THOMAS
THOMAS NEWMAN
JOHN MILBERY

LYNN DREBERT
LOREN CAMPBELL
HAROLD BUTZINE
CARL ESENOFF



EPSILON ETA

Organized Oct. 6, 1921

Fratres in Urbe

ROSS BOND
WILSON CHASE
ERNEST BRITTAIN

DON TAYLOR
GEORGE WILSON

CARL ACKERMAN
WILLIAM PHILLIPS
JAMES LYONS

Fratres in Collegio

CLASS OF 1927

BOB MCCREERY
HOWARD MILLER

EARL ANDREEN
LESTER PENRY

CLASS OF 1928

WAYNE TOLAND

CECIL LLOYD

ARTHUR JESSOP

CLASS OF 1929

HOMER HOSTETTER
FRANK KYES
JACK WILSON

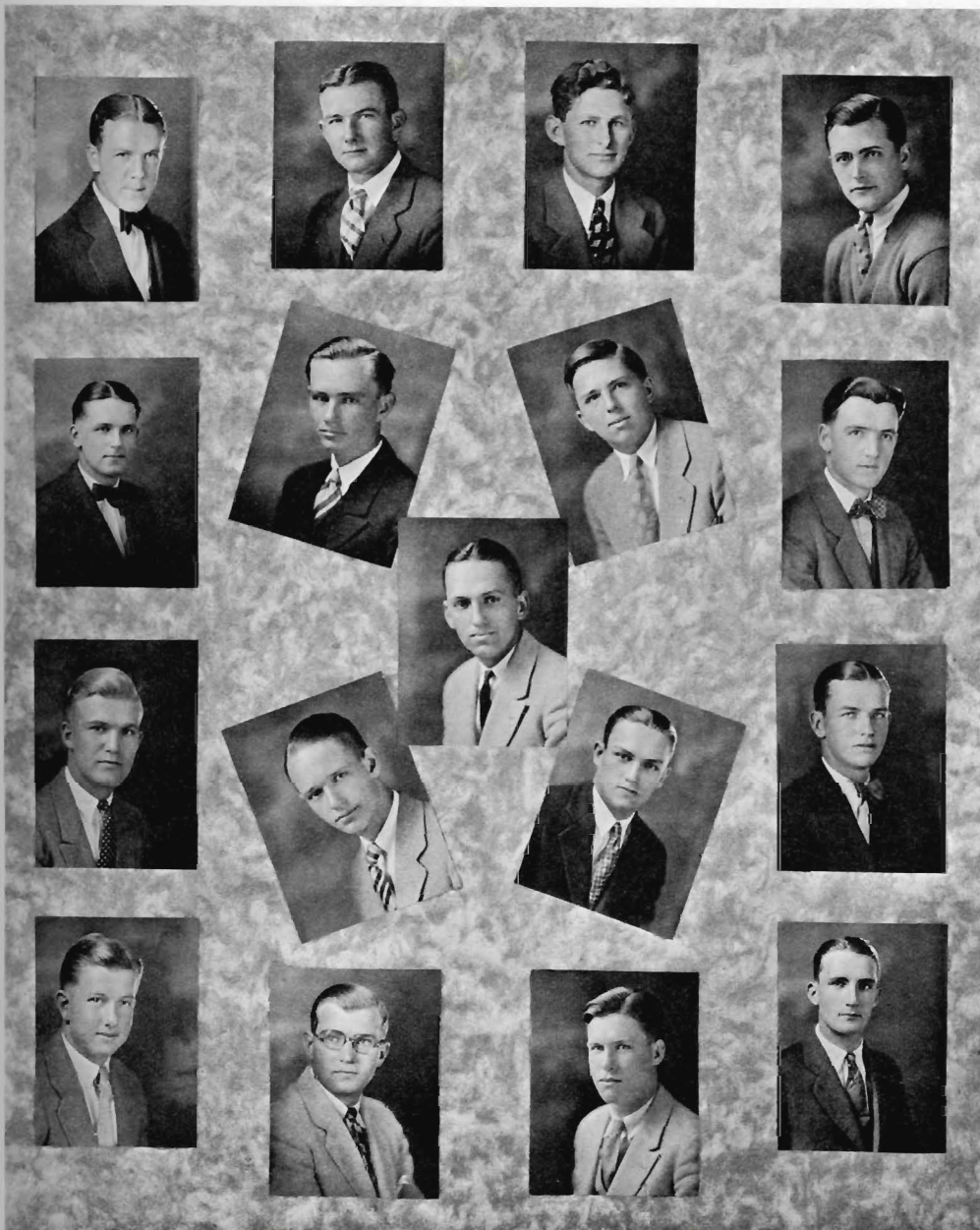
ROBERT MCIVER
WILLIAM MCCREERY

MORGAN ELLIOTT
FRED BARTLETT
OLIVER MALER

CLASS OF 1930

LAWRENCE RUSSELL

JERRY MULVEY



LAWRENCE RUSSELL
JACK WILSON

FRED BARTLETT
WILLIAM MCCREERY

ROBERT MCCREERY
MORGAN ELLIOT
HOWARD MILLER

ARTHUR JESSOP
EARL ANDREEN

FRANK KYES
ROBERT MCIVER

HOMER HOSTETTER
CECIL LLOYD

WAYNE TOLAND
LESTER PENRY

OLIVER MALER
JERRY MULVEY



ETA OMEGA DELTA

Organized Fall, 1922

Fratres in Facultate

O. W. BAIRD

JOHN HANCOCK

Fratres in Urbe

DONALD HANSEN

JULIAN POHL

SPENCER HELD

HARRY STUART

JAMES BLEE

ALLAN KELLY

BRUCE MAXWELL

RICHARD BERRY

PAUL VAN DOREN

JOE VURGASON

Fratres in Collegio

CLASS OF 1926

GLEN VAN DOREN

GEORGE DOTSON

CLASS OF 1927

DAVID BARNES

CLASS OF 1928

VINARD FRANCISCO

BARKHAM GARNER

CHARLES BENNETT

ROBERT JOHNSON

STUART COOK

PAUL MOTT

JACK EVANS

WALTER DEAL

WARD CASH

CLASS OF 1929

CHARLES SMITH

HORACE WARFIELD

FENTON BATTON

DONALD BRAND

JACK ROBB

KENNETH JOHNSON

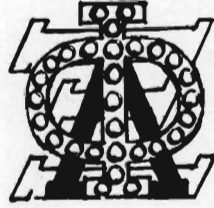


JACK ROBB
WARD CASH
STUART COOK
DAVID BARNES
KENNETH JOHNSON

DONALD BRAND
WALTER DEAL
JOHN HANCOCK
CHARLES BENNETT
FENTON BATTON

HORACE WARFIELD
PAUL MOTT
VINARD FRANCISCO
GLEN VAN DOREN

CHARLES SMITH
ROBERT JOHNSON
BARKHAM GARNER
JAMES BLEE
JACK EVANS



PHI LAMBDA XI

Organized Nov. 16, 1925

Fratres in Urbe

WILLIAM COPELAND
CLARK WALLIHAN

WRIGHT McCONNELL
RALPH SMALL

Fratres in Collegio

CLASS OF 1928

LESTER ERNEST
GERALD THOMAS

ED RANDEL

FRANCIS KNAPP
PAUL PFAFF

CLASS OF 1929

WILLIAM STILLWELL

GLOYDE FUNK

CLASS OF 1930

RICHMOND BARBOUR
ROBERT BARBOUR

LEO STEHR

ROSS WHITE
RICHARD HAWLEY



LESTER EARNEST
RALPH SMALL
PAUL PFAFF
ROBERT BARBOUR

WILLIAM COPELAND
EDWARD RANDEL
WILLIAM STILLWELL
LEO STEHR

CLARK WALLIHAN
FRANCIS KNAPP
GLOYDE FUNK
ROSS WHITE

WRIGHT MCCONNELL
GERALD THOMAS
RICHMOND BARBOUR
RICHARD HAWLEY



SKULL AND DAGGER

Organized November, 1923

Honorary Dramatic Fraternity

Fratres in Urbe

FREDERIC C. OSENBURG
HENRY PARRISH
ELLIS PRICE
BERNICE CORNELL HICKS
VIRGINIA BRECHT
MARY IRWIN

RAY AMEND
COLLINS MACRAE
WALTER KAULFERS
JOSEPHINE ROOT VIAL
WALLACE DICKEY
MRS. GRACE WAUGH BOWMAN

Fratres in Collegio

CLASS OF 1926

LA VANGE HUNT

CLASS OF 1928

HUGH GILLIS
BYRON BRYANT
PAUL PFAFF

MRS. ED ERIKSON
SUE WOLFER

ROBERT FRAZEE
LEWIS SCHELLBACH
SPENCER ROGERS

CLASS OF 1929

ALYCE FOSTER

JANET HELDRING

CLASS OF 1930

TERENCE GEDDIS



JANET HELDRING
ALYCE FOSTER
PAUL PFAFF

HUGH GILLIS
TERENCE GEDDIS
LA VANGE HUNT

MRS. ED ERIKSON
SUE WOLFER
SPENCER ROGERS



FRA DI NOI

Organized December, 1923

Sorore in Facultate

MISS MARKER

Sorores in Urbe

MAGGIE MARY GARRETT

ELLA BUSS

Sorores in Collegio

CLASS OF 1927

CAROLINE BERRY
HELEN McDONOUGH
MARY MONTIEL

HAZEL USHER
CORDELIA HAWKINS
FLORENCE HART

CLASS OF 1928

MARGARET ESSERT McCLURE
EDITH BUSNEHAN

ADA NISBET
MILDRED MORGAN

CLASS OF 1929

MARGARET McDONOUGH
RUTH HANNIGAN

EDNA HANNIGAN
MARJORIE OSGOOD



MARGARET McCLURE
MARJORIE OSGOOD
ADA NISBET

RUTH HANNIGAN
MARGARET BOST
MARGARET McDONOUGH

EDNA HANNIGAN
GEORGIANA SMITH
MILDRED MORGAN



GAMMA PHI ZETA

Organized August 27, 1924

Sorore in Facultate

OLIN GILLESPIE

Sorores in Urbe

MARGIE CASADY
VERA CASADY

MRS. CUMMINGS
PAULINE METTS
GENEVIEVE SMILLIE

EULA HOFF
FRANCIS ROSE

Sorores in Collegio

CLASS OF 1927

ALICE ALLEN

CLASS OF 1928

ESTELLE CONDITT

ESTHER ECKMAN

NELABEL VEALL

CLASS OF 1929

BEULAH BECK
MILDRED MENEFE

HELEN CAMERON
MARGUERITE MILES

NANCY FRENCH
SUE WOLFER



NELABEL VEALL
BEULAH BECK
HELEN CAMERON
ESTELLE CONDITT

NANCY FRENCH
MILDRED MENEFEE
MARGUERITE MILES

ALICE ALLEN
SUE WOLFER
ESTHER ECKMAN
MARGIE CASADY



KOMO

Organized in the Fall of 1923

Sorore in Facultate

DR. GEORGIA COY

Sorores in Urbe

MILDRED HAMMOND
SUSAN LEWIS
ANNETTE RUST
FLORENCE CLETUS

LOVE STICKNEY
RUTH WILKINS
RUTH VARNEY
HELEN TATTERSALL
MERLE SCATES

CAROLYN SPRAGUE
ALICE OPDYCKE
SADIE ANDERSON WILLIAMS
DOROTHY POE

Sorores in Collegio

CLASS OF 1926
MAXINE MURPHY

CLASS OF 1927
ELSIE MORIARTY

CLASS OF 1928
DOROTHY HARRISON
MARGARET GILES
MILDRED DEWEY

MAY DAVIDSON
MARIAN GILES

BERNICE STEELE
MARGARET ADAMS

GLADYS HITT

CLASS OF 1929
DOROTHY HITT
BUENTA BANTA

DOROTHY DAVIES



ELSIE MORIARTY
MAY DAVIDSON
DOROTHY HARRISON
BUENTA BANTA

DR. GEORGIA COY
BERNICE STEELE
MARIAN GILES
MARGARET GILES

MILDRED DEWEY
DOROTHY DAVIES
GLADYS HITT
MAXINE MURPHY



PHI KAPPA GAMMA

Organized February 10, 1924

Sorore in Facultate

MISS EDITH HAMMACK

Sorores in Urbe

TRUE MCGINNESS
PAULINE HINDS

MYRL NEUMANN
MRS. MARIE MCLEISH

Sorores in Collegio

CLASS OF 1927

GRACE GANS

MARGARET JULIAN

CLASS OF 1928

ALVINA COGHLAN
ELIZABETH DENNIS
DOROTHY HALL

MARJORIE JACKSON
ELIZABETH MARTENIS
MARY McDOWELL

ELLEN LOUITT
ZETA O'CONNELL
ADALINE LOUITT

CLASS OF 1929

DOROTHY FLICKENGER

ROSANNA READER

MARJORIE LOOMIS

CLASS OF 1930

GEORGIA AIMAN
PHOEBE COOK

ERNA KEEFER

ALICE HASTINGS
LOU BERNE REYNER



DOROTHY HALL
LOU BERNE REYNER

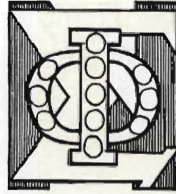
ZETA O'CONNELL
ELIZABETH MARTENIS

ELIZABETH DENNIS
ALICE HASTINGS
MISS EDITH
ADELINE LOUTTIT
MARY McDOWELL

GRACE GANS
ERNA KEEFER
HAMMACK
ELLEN LOUTTIT
MARGARET JULIAN

ALVINA COGHLAN
PHOEBE COOK

GEORGIA AIMEN
MARJORIE JACKSON



PHI SIGMA NU

Organized January 19, 1925

Sorore in Facultate

ALICE RAW
ALMYRA DAWSON

Sorores in Urbe

RUTH CRANE
ARLETTA CORUM STURZINGER
EVANGELINE KERR

ALICE HOFFMAN
HELEN CARLSON
MARY BIXLER

EMMALOU DUDLEY
ALBERTA GROVER
DOROTHY CHAMBERS

Sorores in Collegio

CLASS OF 1928

EVELYN HARPER
ARTHA TYLER

VIRGINIA ELLIOTT

VIRGINIA GRAY
CARLOTTA McCUTCHEEN

CLASS OF 1929

GRACE DOTSON

ESTHER BUCKLEY
RACHEL PARKER

AMY NEUTON

CLASS OF 1930

RUTH FARR



ARTHA TYLER
VIRGINIA GRAY
AMY NEWTON
EVANGELINE KERR

ALICE RAW
RACHAEL PARKER
EVELYN HARPER
GRACE DOTSON
RUTH FARR

VIRGINIA ELLIOTT
CARLOTTA MCCUTCHEON
ALMYRA DAWSON
ESTHER BUCKLEY



SHEN YO

Organized December, 1921

Sorore in Facultate

RUTH BAGLEY

Sorores in Alumni

MRS. MERCEDES SHEA GLEASON
MRS. LILLIAN MCKENZIE HAYGOOD
MRS. BERNICE CORNELL HICKS
MRS. IMOGENE MCLEAN VAUGHN
MRS. JOSEPHINE ROOT VIAL
MRS. VIRGINIA BAYNES SCHUR
MRS. EILEEN BRITTAIN SCHURLOCK
MRS. DEBORAH MCBAIN CURRY

EVELYN BROWNELL
MARJORIE KELLEY
MARIAN JENCKS
MABEL GRIFFITHS
MARY GREINER
MARGARET DE LAUGHTER
LUCIA CHAMPLIN
MARIAN BUTZ

MARGARET ARCHAIS

Sorores in Urbe

MARGARET AYRES
VIRGINIA BRECHT
ELSIE CORRIN
LUCY MAUDE ORD

CATHERINE GIBSON
HELEN KELLY
JENNIE ANNE KNAPP
FRANCES PEACOCK

LUCILLE WILDE

Sorores in Collegio

CLASS OF 1928

BEATRICE DIFFIN
LORRAINE HARVEY

BETTY WAGNER
JANET HELDRING

CLASS OF 1929

ALYCE FOSTER
ORLETHA PRUTZMAN
JULIA HULL

LEOTA TUCKER
WINIFRED GREEN
MARIE BAIRD



BEATRICE DIFFIN
ALYCE FOSTER
LORRAINE HARVEY

JANET HELDRING
ORLETHA PRUTZMAN
LEOTA TUCKER
BETTY WAGNER

WINIFRED GREEN
JULIA HULL
MARIE BAIRD



SIGMA PI THETA

Organized June, 1924

Sorore in Facultate

FLORENCE SMITH

Sorores in Urbe

ANNIE MALER
MABEL GRIFFIN

ALICE DONNELLY

VIOLET MARK
ROZELLA FLANNERY

Sorores in Collegio

CLASS OF 1928

CAROL MORGAN
NEVA CURTIS

BETTY PEAIRS
KATHERINE CROSE
KATHRYN COZENS

MARGARET McCONNELL
DOROTHY LYONS

CLASS OF 1929

GERTRUDE FLEET
REBECCA GOATLEY

NELLE ANDERSON

HAZEL WOODS
HELEN SCHWARTZ

CLASS OF 1930

MARIE STANLEY

MILDRED WILLIAMS

ESTHER FEENEY



ESTHER FEENEY
MILDRED WILLIAMS
MARIE STANLEY
HAZEL WOODS
HELEN SCHWARTZ

NELLE ANDERSON
REBECCA GOATLEY
GERTRUDE FLEET
DOROTHY LYONS

KATHERINE COZENS
KATHERINE CROSE
BETTY PEAIRS
NEVA CURTIS
CAROL MORGAN



SPHINX

Organized October 18, 1921

Sorore in Facultate

MRS. CHARLOTTE G. ROBINSON

Sorores in Urbe

ELIZABETH HOOPES
MARGARET PARKER
ELIZABETH LEE
ALICE NEAL

EVELYN RICE
ELIZABETH WILSON
MRS. ANGUS SMITH

ELIZABETH EVES
ETHLYNN BOYD
HILDA SHEA
DOROTHY WILSON

Sorores in Collegio

CLASS OF 1927

LYLA WILSON

CLASS OF 1928

HARRIET POLLOCK
FRANCES BUCK

VIRGINIA WENRICH
HARRIET PEARSON
LUCILE STILES

EUGENIA HAYWORTH
MARY PARKER

CLASS OF 1929

MARGARET McCORMICK
ADA ARNOLD
MARJORIE McILWAIN

CYNTHIA STANTON
MAYBELLE BICKERTON

MARIAN MORAN
ALICE McDONALD
KATHERINE SAMPLE

CLASS OF 1930

SABRA MASON

ADRIENNE KESSLER



LYLA WILSON
HARRIET POLLOCK
MARY PARKER
ADRIENNE KESSLER

MAYBELLE BICKERTON
FRANCES BUCK
MARGARET McCORMICK
SABRA MASON
MARIAN MORAN

MARJORIE McILWAIN
VIRGINIA WENRICH
HARRIET PEARSON
KATHERINE SAMPLE
LUCILE STILES

CYNTHIA STANTON
EUGENIA HAYWORTH
ADA ARNOLD
ALICE McDONALD



TAU ZETA RHO

Organized September, 1924

Sorore in Facultate

MARJORIE LANDERS

Sorores in Urbe

RUTH FITCH

BERTHA MUELLER

CAROL SMITH

Sorores in Collegio

CLASS OF 1926

MARTHA KETTLE

CLASS OF 1927

ERNESTINE PETERMANN

CLASS OF 1928

LORA TOMPKINS

IRMA MEULLER

VIRGINIA LANDERS

CLASS OF 1929

IVA COPPLE

DOROTHY NAUMAN

ALICE SUE WALLACE

BERNADINE CUSHMAN

ELEANORA SCHNEIDER

EUNICE LATTI

PHILLIS SPITTLER

MILDRED BEGLEY

VERNA KIMBERLEY

GERTRUDE PETERMANN

STELLA FULTON



VIRGINIA LANDERS
LORA TOMPKINS

MARTHA KETTLE
ELEANORA SCHNEIDER
MISS MARJORIE LANDERS

DOROTHY NAUMAN
ERNESTINE PETERMANN
MILDRED BEGLEY
EUNICE LATTI

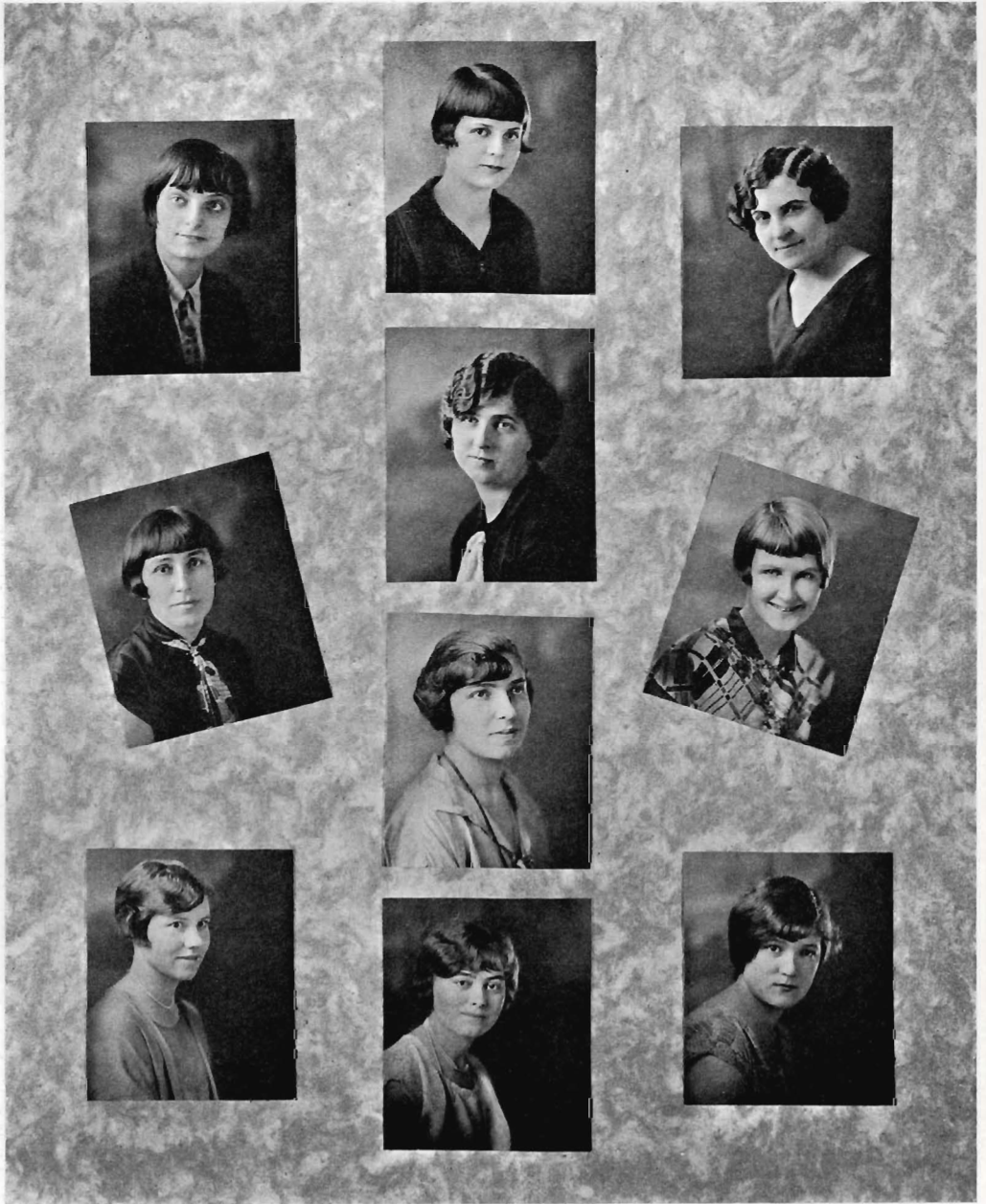
VERNA KIMBERLY
BERNADINE CUSHMAN

ALICE SUE WALLACE
GERTRUDE PETERMANN

IVA COPPLE
IRMA MUELLER

PHYLLIS SPITTLER
STELLA FULTON

JUG CLUB



VERA MORRILL
BILLIE BUSS
MARY YOUNG

GLADYS STONEMAN
GRACE HILDRETH
ANONA STINNET
IRMA MUELLER

CLEONE MEYER
DORIS LANNING
ALYCE ELLORY

JUG CLUB



CLARICE DEWITZ
ELIZABETH JOHNSON
KATHLEEN McNULTY
EDITH ALLEN

MARGARET BOEGEMAN
CARMETTA HARRIS
MARY BAILEY
KATHERINE BILDERAIN

BERNICE STEELE
MRS. EMMA ROBBINS
VIRGINIA LANDERS
MARIAN GILES

CALENDAR

Monday, Sept. 14—

Aztecs start greatest year, as witnessed by numerous "improvements."

Friday, Sept. 18—

Freshmen lost at President's lawn party. Gridders hold first practice game. Dilley chosen to captain squad.

Wednesday, Sept. 23—

President Hardy addresses assembly, and starts "office boy" anachronism on its giddy career.

Thursday, Sept. 24—

Gushing season in full sway and campus desecrated with promiscuous osculations. As result somebody starts the "Hello" tradition. Court of Traditions takes no action.

Saturday, Sept. 26—

Aztecs bow to Southern Branch in bitter game.

Wednesday, Sept. 30—

Sphinx sorority bursts into print for the first time. Other gushers gaze aghast. Court of Traditions takes no action.

Thursday, Oct. 1—

College life goes timefully with the Glee and musical societies starting up.

Saturday, Oct. 3—

State defeats Redlands in second grid contest of year.

Wednesday, Oct. 7—

State College withdraws from Junior College Conference. Student faculty council recommends rowing. Court of Traditions remains silent.

Thursday, Oct. 8—

Colby assumes editorship of Aztec. Vocabularies of reporters gradually assume a new richness and variety.

Saturday, Oct. 10—

Aztecs defeat Caltech.

Wednesday, Oct. 14—

Booster club organizes. Intelligensia retire to fold of St. James.

Friday, Oct. 16—

Gushing season draws to close. Colby says nothing. Hardy says nothing. Court of Traditions silent.

Tuesday, Oct. 20.

Inter-fraternity council organizes.

Wednesday, Oct. 21—

Fox elected to head Booster Club. St. James is silent.

Saturday, Oct. 24—

Aztecs vanquish Whittier, 24-0.

Wednesday, Oct. 28—

Drama organizes; Music chosen for noon dances. Improvements rise on all hands.

Thursday, Oct. 29—

Stanford recognizes Aztec three-year work.

Saturday, Oct. 31—

Gridmen slump before Loyola.

Wednesday, Nov. 4—

"Faculty Players Draw Huge Crowds"—These are Colby's own words.

Thursday, Nov. 5—

Boosters' Banquet. Court of Traditions says nothing.

PRIZE SNAP PAGE



Hold'em Kid !!



Sisters All ~



Awkward Age



Pledgies — Behave



Suckers ~



Pee K-A-boo ~



Knee deep



Mascots

- Saturday, Nov. 7—*
State defeats Santa Barbara.
- Saturday, Nov. 14—*
Aztecs tie Marines in most sensational game of grid season.
- Wednesday, Nov. 18—*
Women's edition of Aztec comes out as journalists tear hair. Baseball looms on sport calendar.
- Saturday, Nov. 20—*
State defeats Cal. Christians.
- Tuesday, Nov. 25—*
Columbia University recognizes State College degrees. A. M. S. chooses officers. Body lapses into lethargy.
- Wednesday, Nov. 24—*
Drama going strong as cast chosen for "New York Idea."
- Thursday, Nov. 25—*
Thanksgiving day. Grid game in Stadium.
- Tuesday, December 2—*
Phi Lambda Xi pokes head into Aztec frat field.
- Wednesday, Dec. 3—*
Citizen's Body commences squabble. Hod's start fraternity row with their house.
- Saturday, Dec. 6—*
Basket ball work commences.
- Wednesday, Dec. 9—*
Football banquet held. Barnes new captain.
- Thursday, Dec. 10—*
Women hold "Echo" dinner. Court of Traditions fails to hear. Punting contest held.
- Tuesday, Dec. 15—*
Inter-frat council adopts new constitution.
- Saturday, Dec. 19—*
Brand wins first Casaba game of season. Orgy of Xmas holidays begins. Court of Traditions remains discreetly silent.
- Monday, Jan. 4—*
School resumes. Booster Club gives rising vote of thanks.
- Wednesday, Jan. 6—*
Supt. Wood passes buck to citizen's committee. Prominent San Diegans commence "Keep the Park as God gave it to us" campaign.
- Friday, Jan. 8—*
Casaba varsity defeats U. C.
- Saturday, Jan. 9—*
Two Masque Players present "New York Idea."
- Wednesday, Jan. 20—*
Ex-committee rules to give football sweaters. Laundry bills on shirts drop immediately. Women's athletic emblems awarded. Irish relay a howling success. Aztec society page assumes gradual literary tone.
- Saturday, Jan. 23—*
Aztec Casaba men drop game to Loyola.
- Saturday, Jan. 30—*
Casaba men wallop local Leathernecks.
- Monday, Feb. 1—*
Track season commences simultaneously with bargain sales on B. V. D's.
- Wednesday, Feb. 3—*
Registration commences: Hordes of Frosh. Bachelor Girls active. Court of Traditions silent.



DO CO-EDS HAVE WHEELS?



A-Z-T-E-C



GET OUT AND PUSH



YOUR HONEY OR YOUR WIFE



OH DOCTOR!



SOME GRAFT



LOOK AT 'ER!



QUARTETTE HARMONY



THE HEADLESS HORSE —



WHAT-NO WATER?



THE COACH AWAITS



7-32-12-24-81



WHAT'S YOUR HURRY?



CHARLSBURG



BEAUTY IN EVERY JAR!

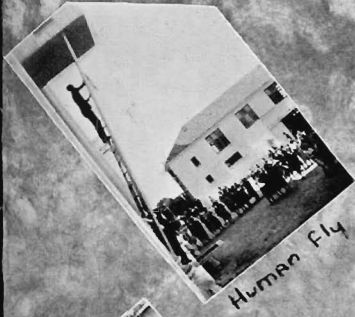


HULLY GEE



REMEMBER THE U.S.B. GAME!

- Saturday, Feb. 6—*
Aztecs rise and take vengeance on Loyola.
- Tuesday, Feb. 9—*
Furore created as student treasury discovered to have surplus. Bachelor Girls say nothing. Others would like to.
- Saturday, Feb. 13—*
Aztec Casaba men add scalp to tribal collection.
- Wednesday, Feb. 17—*
Del Sudoeste staff chosen. Drama and art active. Debate commences.
- Friday, Feb. 19—*
Citizens committee stalls after hearing Nolan's opinion. Court of Traditions stirs.
- Saturday, Feb. 20—*
U. S. C. Dental college defeated at Casaba game. Track season commences with Frosh artists competing with Sweetwater Hi.
- Wednesday, Feb. 24—*
Fox liberates Frosh. St. James silent. Constitutional revision committee starts work. Lobby Loafer starts his famous literary reviews. Holbrooke organizes his "Scrub Club." Colby blows up.
- Friday, Feb. 26—*
Citizens committee makes recommendations.
- Saturday, Feb. 27—*
Aztecs score in L. A. relays.
- Wednesday, Mar. 4—*
Great manure scandal comes to light. Red lights disappear. Lobby Loafer refuses to comment on nasty subject. Colby writes letter to President.
- Wednesday, Mar. 10—*
Scrubs informed as to location of their stopping point. Site squabble continues. Court of Traditions says nothing.
- Thursday, Mar. 11—*
Interclass track begins.
- Saturday, Mar. 20—*
Arizona here for track meet. Bachelor Girls hold their famous "Arizona Night."
- Tuesday, Mar. 23—*
Inter-frat council decides to enforce pledging rules.
- Wednesday, Mar. 24—*
Site committee decides to stall off until October. Bachelor Girls disappointed at lack of publicity.
- Saturday, Mar. 26—*
Aztec-Grizzly track meet.
- Wednesday, Mar. 31—*
Final tryouts for spring opera.
- Thursday, April 1—*
College inundated with aroma of limburger. Court of Traditions dies.
- Saturday, April 3—*
Aztecs win A. A. U. track meet.
- Wednesday, April 7—*
Hardy reappointed as college head. Horace Taft blows up in St. James Column.
- Friday, April 9—*
Blissful week commences.
- Friday, May 28—*
Robin Hood presented.
- Friday, June 18—*
Finals finished.



Human Fly



"Prezy" in the box



Percent?



Rubbish



Our "Hero"



Pretty Scrubby



Sunkist Peaches



RAHyoo!



Hit 'em hard!!



Social climbers



OH DEAR!



Step Now!



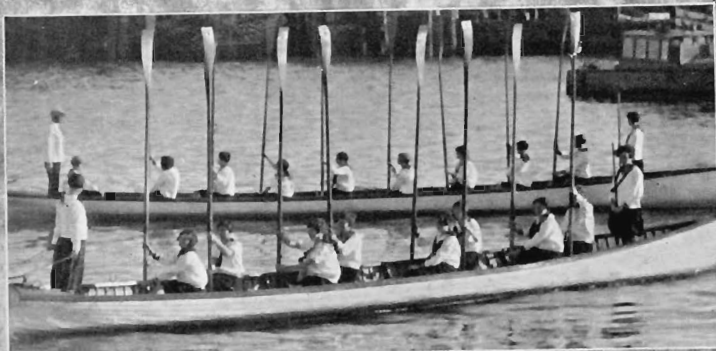
Hire A horse!



W.A.A. SPORTS



None halant



OARS



Good sport



Endless chain



Let 'er go Gallagher



Pony Chorus



Floored!



Babe Ruth!



Champs



Oh!! Frogs!!



Spak 'em



Five - smile

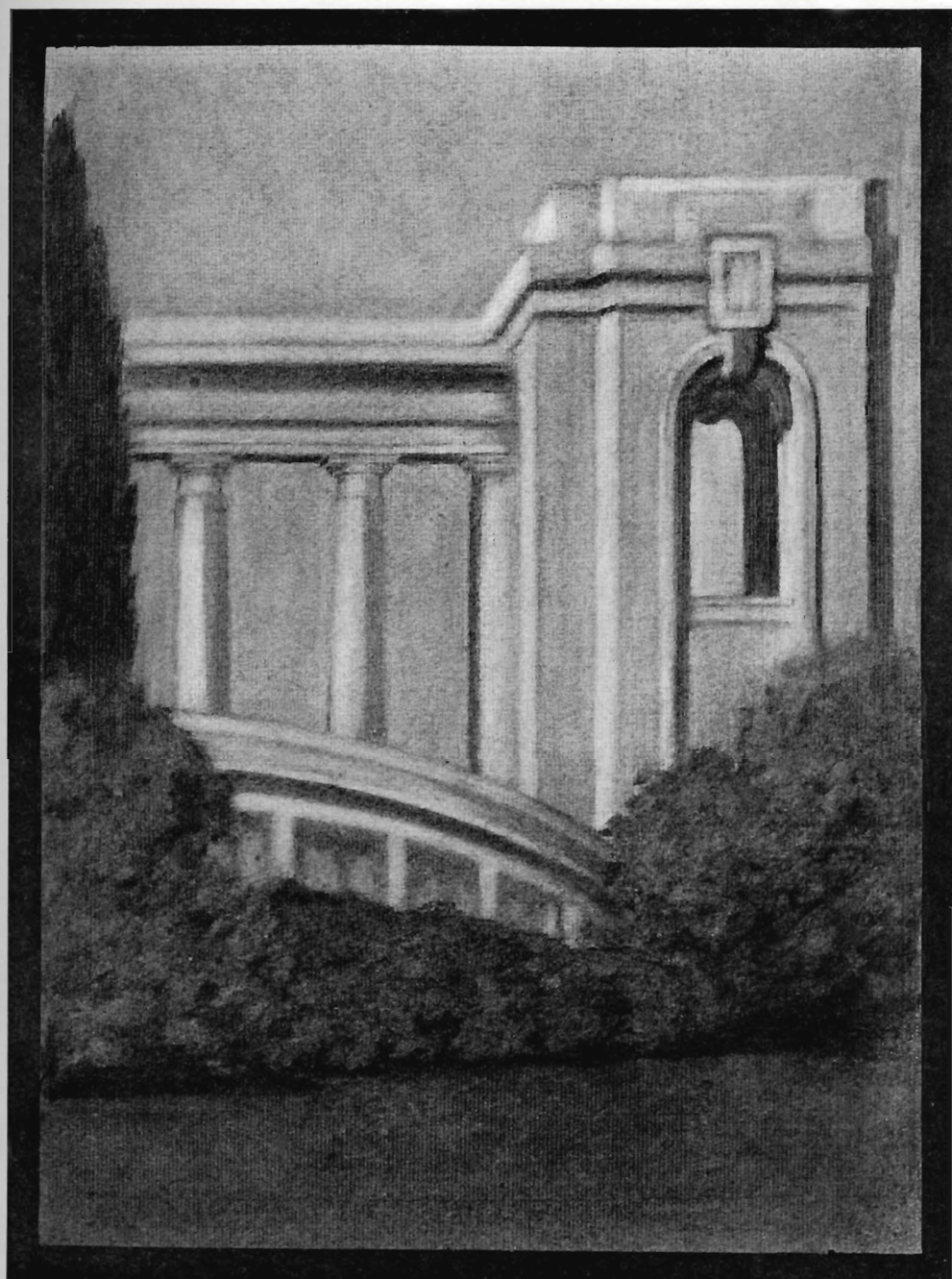


Between sets

Athletics

"The Stadium"

By Janet Heldring



ATHLETIC RESUMÉ

EQUAL STANDING with the strongest four-year degree granting institutions of Southern California is the fitting climax for the years of struggle out of the obscure position of a small Junior and Teachers college. Led by Coach Charles Peterson, and backed throughout by Dean Arthur Peterson, San Diego State College was admitted to full membership in the Southern California intercollegiate conference.

A brief glance over the past year's accomplishments in athletics will readily afford reasons for such action. Since State was acting as a free lance, no championships could be brot back to the Aztec stronghold by any of her teams, but the various scores made against the highest calibre teams ever played are as honorary as a title.

Fighting against the odds in nearly every case, State's gridiron team brot glory to themselves and honor to San Diego. Captained by Elden Dilley, premier line plunger and triple threat man, and ably managed by Wayne Toland, the Aztec squad worked smoothly the entire year. The initial game was lost to Branch, 7-0, admittedly the strongest team in the conference. Compensating for this was the 24-0 victory over Whittier's team which had just subdued Branch, 7-0. Worthy of highest mention is the 14-14 tie with the powerful Marine machine. This game brot more recognition for State than the wins over three conference teams had accomplished.

Scarcely thru with football, the Aztecs turned to basketball, and played the largest and most successful schedule in the history of State College. Nineteen games were played, which resulted in fifteen wins and four defeats. The first and hardest tilt was lost to Southern Branch, 32-17, ranked among the three best casaba teams on the Pacific coast, due to victories over Stanford and all the Southern Conference squads. Wins over the California lighties, U. S. C. Dentals and Loyola contributed to the season's success. High point honors went to Mott with 249, and Busch who garnered 102 points. Evidence of the fundamental soundness of the Aztec hoopsters may be found in the fact that the County team and individual free-throw contest was won by having the highest team score, while Carr won highest number honors and Mott took the consecutive throw title. Captain Paul Mott capably guided the State quintet on the floor, and William Copeland emulated his previous season's success as manager.

Track was not as successful as could be desired, owing to a schedule of but three collegiate meets and the County A. A. U. meet. In spite of a short season, Coach "Cheerful Charlie" produced the finest cinder squad State has ever had, and nine of the fifteen records were broken and one tied. The County A. A. U. meet saw State decisively and for all time settle any disputes as to what organization does and shall rule supreme in the sphere of track and field. Powell ended the season with a total of 64¼ points (the same number as had Duke Clearbrook, last year's high point man), to Mott's 60. Mott led Powell in Varsity points by a half point, having 27 to Bill's 26½. Loris Hoyt captained the team while Ed Ruffa held down the managing job.

Baseball came into its own this year, and a class of ball was played which was very good for a first-year team. Next year State should have a conference championship nine, since the individual playing was excellent and the teamwork at times compared favorably with that of teams which had played together for several years. Johnny Hancock handled the coaching, with Kenny Johnson leading the team on the diamond, and "Chuck" Bennett tending to the business end.

The tennis season got off to a poor start, with Manager Ted Treutlein's appointment coming too late for any Varsity matches to be made. Four men were sent to Ojai, where a creditable showing was made.

No rowing, swimming, boxing or wrestling teams competed this year, though a very strong swimming team was organized under "Chick" Harris, which will serve as a nucleus for State's first conference team in this sport next year.

All prospects point to strong State teams in football, basketball and swimming, while baseball, track and tennis should be in the upper group of conference teams.



C. E. PETERSON



J. M. HANCOCK



WAYNE TOLAND
Football



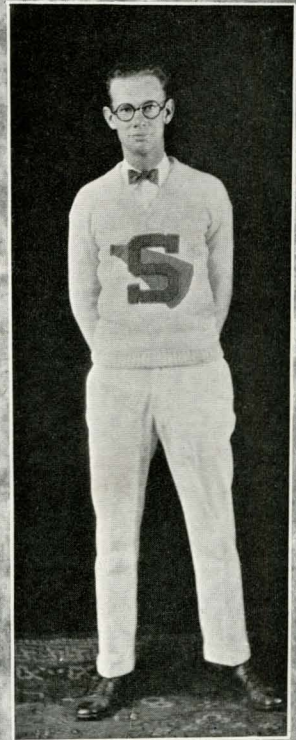
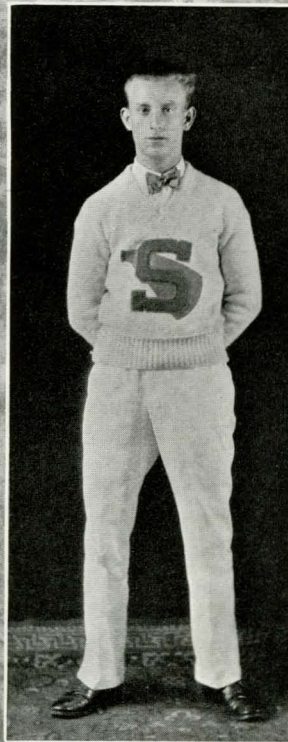
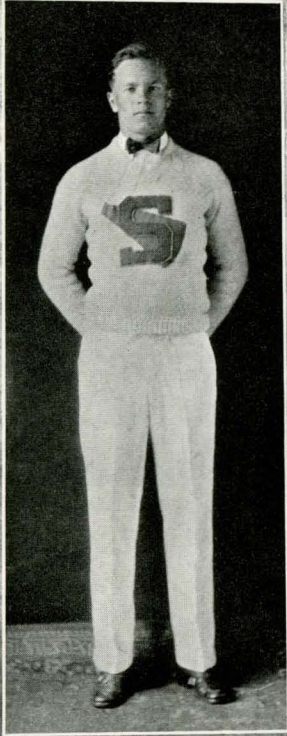
BILL COPELAND
Basketball



ED RUFFA
Track



CHARLES BENNETT
Baseball



YELL LEADERS

DINON BUSCH

WILLIAM STILLWELL

WRIGHT McCONNELL

FOOTBALL

Sept. 26—State	0	Southern Branch	7
Oct. 3—State	10	Redlands	0
Oct. 10—State	20	Caltech	6
Oct. 24—State	24	Whittier	0
Oct. 31—State	9	Loyola	13
Nov. 7—State	14	Marines	14
Nov. 14—State	10	Santa Barbara	0
Nov. 21—State	13	Cal. Christian	6
Nov. 26—State	7	La Verne	13

STATE'S first season as a free-lance, playing four-year colleges, did not result in the clean sweep which has hitherto been her portion while playing in the junior college conference. But State college has firmly and indelibly fixed in the minds of those whom our eleven met this year, the fact that the teams of the Purple and Gold are menacing, slowly but surely, the laurels of the Southern Conference.

For the first time practice was begun a week before school commenced, and saw eighteen men out in moleskins. A first team under Peterson, and a second team coached by Hancock, were selected and treated to large doses of dummy tackling, pit and sled practice.

Tackling Southern Branch on the northern field, the Aztecs battled the Grizzly warriors on even terms in the midfield for two quarters of a punting duel. In the third quarter State pushed down the field to the enemy's ten-yard line, but lost her only chance by an unfortunate fumble. Though Robb and Avery were forced out on account of injuries, the fourth period drew to a close, forecasting a tie game, but after holding for downs a disastrous punt from under the shadow of State's goalposts enabled the Branch gridsters to push across the only marker of the game.

Redlands was next encountered on the Baptist gridiron and treated to a decisive trouncing, which the 10-0 score fails to indicate. Gaining momentum, the Aztec machine plowed through the Caltech eleven to win 20-6, after ending the first quarter 6-6. Hester's smashing plunges were one of the greatest factors in bringing on the Beaver defeat.

After resting a week and seeing Stanford defeat Southern California, the Statesmen proceeded to expound the exceeding effectiveness of the Warner system, to the complete satisfaction of the Poet team. The line repeatedly outcharged its opponents, while Dilley ran the Whittier ends ragged. The final whistle saw State a 24-0 victor over the team which had defeated Branch the week before.

Lulled into satisfied overconfidence by a series of victories, the Aztecs went onto the field against Loyola, riding for a fall. Not at all loath to comply, the Catholic Lions outplayed State in every department of the game in all but the third quarter, to win 13-9.

Further consolation appeared in the shape of the Marines, boasting their best team in years and containing several Quantico stars, who were topheavy favorites to win by a large score. It seemed that dope was right for once as the Leathernecks paraded up and down the field on line bucks, end-runs, and fake criss-crosses. But in the fourth quarter the tide of battle turned. With the score 14-0 against them, the Aztecs launched a brilliant aerial attack that befuddled the astounded Devil Dogs. The first touchdown was netted by a pass to Mott, who also kicked the extra point. With four minutes to go all seemed lost, but three long passes, followed by two vicious plunges by Dilley, placed the ball across. When Mott kicked the extra point to tie the score, there ended the finest game State had ever played.

Santa Barbara provided a slow one-sided game, marred by poor officiating, which State won 10-0.

The Cal. Christian game witnessed the remarkable improvement of a team which had been whitewashed the year before, 54-6, to a passing machine which had State apprehensive at all times and only allowed the Aztecs a 13-6 win.

To end the season, La Verne was played in a heartbreaking game on Thanksgiving day, which gave State no cause for giving thanks. Taking advantage of the breaks, the Leopards won 13-7, although they only made five first downs to fifteen for State.



CAPTAIN ELDEN DILLEY, quarterback, second year, was the best half in the conference, according to several coaches. In absence of quarterback he handled the signals. He was one of the best defensive backs and cleverest openfield runners State ever had and a triple threat man



CAPTAIN-ELECT, DAVE BARNES, tackle, third year. Dave is big, powerful, competent and fast—a man, who was slow in developing but who is now one of strongest linemen in smaller colleges of Southern California. Great things are expected of him as a player and as captain.



BARKHAM GARNER, end, second year. He is a bulldog type—light but scrappy. Pepped it up all the time. One of the most reliable ends ever at State—his ambition is to be the outstanding one on State's first team in the conference.

ED SMITH, guard, first year, was a transfer from center at Washington State into guard here. He added great strength to the line and could relieve at center.



BOB MCCREERY, center, third year, is from a line of football-playing Scotchmen. Bob is an accurate passer and good defense man. Though bad ankles slowed him up, he played first center most of the year.

HOLLIS FITZ, guard, first year, is from Santa Ana J. C. He is one of the hardest working and unselfish players on the squad. His first love was end, but, to fill in a vacancy, he was switched to running guard.





PAUL AVERY, tackle, second year. Paul is large, strong, fast and willing—all the adjectives which could be applied to a top-notch lineman. "Ham" was a tower of strength, and with Barnes formed a pair of ploughhorses which tore up the enemy line.

TOM HESTER, fullback, fourth year. Some opponents rank him as best fullback in the conference. Though bothered by a rib injury, he played a fast, smashing game. His best game was against Caltech, in which he ripped their line to shreds.



JACK ROBB, tackle, first year. Though out of school for several years and handicapped by an injured hip, he got in often enough to show that he could fill in a cog on the machine in fine shape. He possesses the everlasting scrap from Sweetwater.



ED RUFFA, halfback, third year. He is a back with all possibilities of any back ever at State, a good kicker and passer as well as line plunger. He played his best of the season against Redlands.



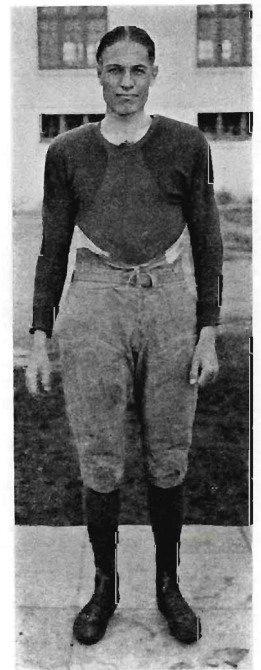
CHARLES SMITH, guard, first year, was willing, and very fast for a lineman. "Fat" was bothered by a bad shoulder all season, but is a most likely prospect for next fall.



WALT DEAL, halfback, second year, was the most consistent man on the squad. He is fast and larger than he appears. He can handle passes and was a consistent try-for-point kicker, missing but one during the season.



BILL ROTH, guard, first year, was one of strongest men on the team. If he can add speed to strength he will stand out next year. He could fill out at guard or tackle, and improved with every game.

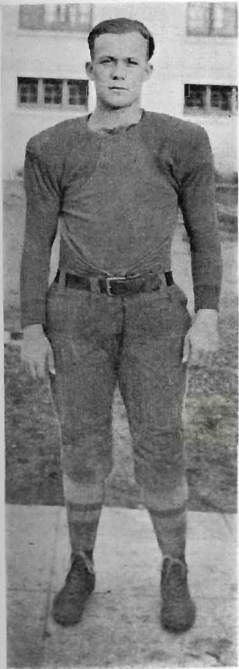


GEORGE DOTSON, end, third year. He started quite late but relieved the situation at end. He could play guard or end, and was a great help in time of need.



PAUL MOTT, end, second year. Paul has the most potentiality of any man on the team. He played his best game against the Marines and should exceed that in every game next year. Slow in developing, "P. Augustus" is a consistent punter and won the Sharpe punting trophy for the second year.

KENNY JOHNSON, halfback, first year, was the fastest man on the squad. Having been out of football for two years he did not hit his stride until late. He is a hard tackler and built right, and great things are expected of him next year.



STUART BICHET, guard, first year. Though from the South he had no hookworm, and was a plugging type of player, always reliable and capable of substituting in any of four places on the line.

BILL MCCREERY, halfback, first year, is a fast, slashing type of back who with another year of age will be a back-field star. Bill can handle passes nicely, and will carry on the name of the McCreerys.



BASKETBALL

Dec. 19—State	17	Southern Branch	32
Dec. 21—State	23	Redlands	10
Jan. 8—State	28	Univ. of Cal. 145's	24
Jan. 16—State	44	Cal. Christian	5
Jan. 23—State	14	Loyola	20
Jan. 30—State	24	Loyola	17
Feb. 6—State	31	Southwestern	14
Feb. 13—State	29	U. S. C. Dental	20
<hr/>		<hr/>	
210		142	

PLAYING nineteen scheduled and practice games, State went thru a season which well may be ranked as the best basketball year ever experienced at State. As a free-lance schedule was played, much stronger competition was encountered than heretofore, though only four games were lost compared to six defeats in the previous season.

A regular collegiate schedule composed of eight California colleges was played, which resulted in defeats at the hands of the strong Southern Branch team, and Loyola. The A. A. U. tournament was entered, but State lost to the all-star Y. M. C. A. team.

The initial squad selected at the beginning of the season remained practically intact the entire year, only Carr working up from the second team. Four of these men were letter men from last year. A smoothly working team was produced, which amassed 515 points to their opponents' 365. The State "rear guard" was the equal of that of any team met, and distinctly superior to that of nearly all.

First and hardest game of the season was with Southern Branch. The Grizzly team had defeated the L. A. A. C. and Hollywood A. C. teams, and was doped to win by as large a score as the previous season's 53-33 victory. The dope ran fairly true, as State was outclassed from start to finish, and lost without an alibi, 32-17. This defeat in no way dampened State's spirits or ambitions, for the Branch team also handed equally decisive defeats to Stanford and the Oregon Aggies.

Going north to Redlands, the locals licked the Baptists to the tune of 23-10, in a listless game. During the Christmas holidays no scheduled games were played, but the State quintet defeated the National City Baptists, 27-25; while the Fletcher Five, Eta Omega Delta, and the County "Y" teams were taken down 28-24, 31-14, and 30-26 respectively.

The first game of the new year saw the barnstorming University of California 145-pound team bested in a tight game, 28-24. With Busch on the sidelines nursing a bad foot, the Statesmen lost a slow practice game to the Submarine Division 16-12. To make up for the blot on their record, the State team romped over Cal. Christian College, 44-5. A reversal of verdict was the defeat on the Lion's Court by Loyola. However, this was amply made up for by a 24-17 victory in a return game on the Army and Navy "Y" court.

Practice games were won from Todd's All-Stars, 29-11 and 33-29; Grossmont, 30-11; Marines, 37-12; and Naval Training Station, 34-22.

The final scheduled games were wins from Southwestern University, 31-14, and from the U. S. C. Dentists, 29-20. State entered the A. A. U. County Tournament, but was eliminated in the semi-finals by the powerful Y. M. C. A. team, 33-14. This association team, alias the First National Bank, holds several state and Southern California bank and association championships, and is practically a county all-star team in itself.

SECOND TEAM BASKETBALL

Ending their season by playing the Y. M. C. A. quintet in the finals for county unlimited championship, Coach Hancock's second team finished a most successful season. Playing through a hard schedule of sixteen games, six were lost to such teams as the National Bank, Grossmont High, and the Varsity substitutes.

CAPTAIN PAUL MOTT, forward, second year. Last year and this he was one of the most accurate shots on the team. He was always a very difficult man to cover, and though several teams had him spotted he would slip away for fifteen or twenty points. The end of the season found him highpoint man with 249.



DINON BUSCH, forward, first year, from Grossmont. Dinon was a good running mate for Mott, and though not as consistent as desired in shooting, made up for it by his continual fight and "pep". He was second highpoint man with 102.



JACK ROBB, center, first year, from Sweetwater. Jack had been out for several years and was slow in getting into shape, but by midseason was one of the team's standbys. Though not towering above his opponents, he could get the tip-off from nearly every team played. A good defensive player, he can fill in at any of two or three positions.



Elden Dilley, running guard, second year, was the best dribbler and fastest defensive man on the squad. He improved decidedly over last year, and his work at defense with Dotson provided a combination hard to break through.

GEORGE DOTSON, standing guard, fourth year, is one of the best standing guards in Southern California. Even the teams he plays on admit he is fifty percent of the squad's defense.



CHARLES SMITH, forward, first year, from Coronado. A versatile player, and could go equally well at guard or forward, and though playing a good defensive game he did not equal his abilities in shooting. Next year it is hoped he can get his shooting eye and play the game he is capable of.

STUART COOK, guard, second year, from Bovina. In view of the loss of the Dilley-Dotson combination, Cook and Telford were worked into the guard positions and given opportunity to display their wares, which they did in a very satisfactory manner.



GEORGE TELFORD, guard, first year, from Ramona. George was the harmonious partner of Stuart Cook in the absence of Dilley and Dotson. Given an opportunity to show his ability he was sure to make the best of it.



LAWRENCE CARR, sub-center, first year, from Grossmont, was the youngest man on the squad, and one who showed the most improvement during the year. He worked up patiently from the second team, and richly deserved his letter.

TRACK

Southern California A. A. U. Relay Carnival: U. S. C. Frosh 14; State College 12.
University of Arizona 70; State College 52.
U. C. Southern Branch 81; State College 49.
State College 85; California Christian College 55.
County A. A. U. Meet: State College 89½; San Diego High School 42.

TO PRODUCE a better track squad each year has been Coach Peterson's ambition, and this season was no exception. Hampered by rainy weather, and prevalent colds among members of the squad, excellent work was done in all meets entered. In no case was there a letdown or falling away from expected accomplishments. Fourteen men earned their letters and the different events were well represented by these lettermen.

Arizona came west March 20, and by taking ten out of fourteen first places defeated the Aztecs 70 to 52, in a close and thrilling meet. Five college records were shattered by Statesmen, while Paul Mott took high point honors with eleven markers.

Going north to Southern Branch, State experienced its worst defeat of the season, when the Grizzlies revenged themselves for last year's defeat at the hands of the locals and triumphed, 81⅓ to 49⅓. Branch took nine first places, while the Purple and Gold came out leading six times.

The County A. A. U. was a complete vindication of State's reputation on the cinder track, and saw the Aztecs pile up more points than all her opponents put together. Seven out of fifteen first places were taken. Bill Powell of State was high point man,

Ending the season in a proper manner, State took Cal. Christian College to the cleaners, 85-55, on the Service field, which produced no records because of the wet track.

An inspection of the records shows that nine records were set up and one tied. Powell ran the century in :10.1 for a new record, tied the furlong with :23, and is co-holder of the 440 yard dash with Worden in :51.4. Worden is one of the finds of the year, and should get close to :50 flat next year. In the 880 Guy Fox made 2:05.2 for a gold medal. The mile saw Genet running the four laps in 4:45.1, while Crosby ran the two-mile grind in 10:42.3. G. Fox, Boydston, ~~Hoyt~~ and Worden hold the mile relay record in 3:28.9. Three field events went by the board when Morris Fox broad jumped 21' 10½", Paul Mott put the shot 39' 11⅝", and Werner Peterson threw the javelin 162' 9".

Besides the men mentioned above, Captain Loris Hoyt, Frank Boydston, Tom Hester, Cecil Lloyd and Fennell Wallen made their letters. Boydston in the hurdles and Johnson in the sprints made a very good showing. In Varsity letter points Mott was high point man with 27, followed closely by Powell, who garnered 26½. For the season's grand total, Powell is high man, with 64¼ points, and Mott takes second place with 60.

As a part of the track season mention should be made of the preliminary cross-country runs. A squad of six freshmen ran in the Southern Conference freshman cross-country run at Pomona in December. Genet and Brand placed third and fourth, and Knapp and Fulton placed seventh and eighth, out of forty-three entrants, to give State an unofficial third place. The interclass cross-country was won by Crosby; Genet, Brand, Knapp and Fulton placing in the order named.

Those who helped swell State's score were: Bullen, Bill McCreery, Forrester, Walt Deal, Taft, Jimmy Fulton, and Don Brand. Also deserving special mention for continuous practice and activity in meets are: Busch, Butzine, Capwell, Dotson, Duggan, Dick Hawley and Knapp. Ed Ruffa took care of the business end of the sport.

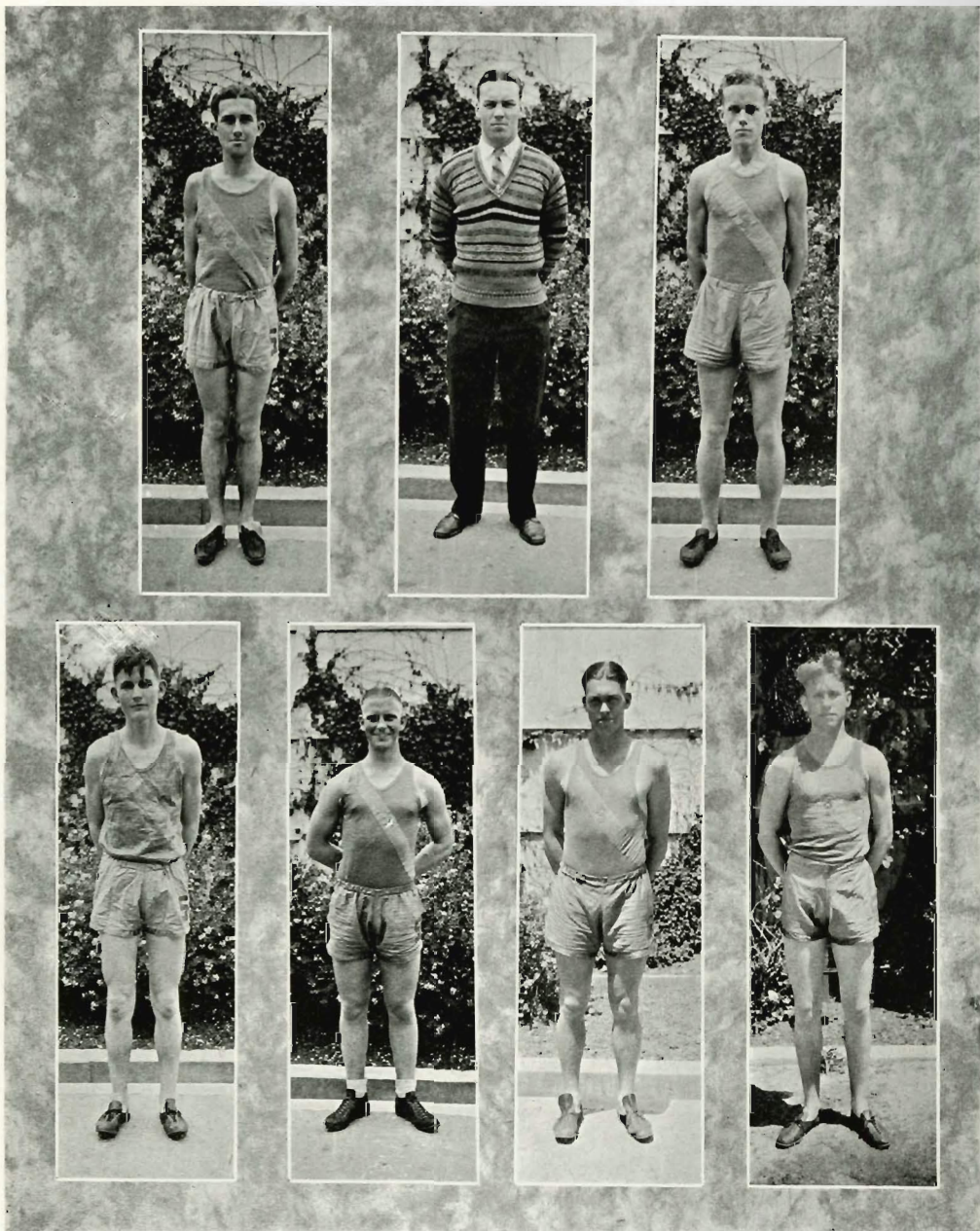


LORIS HOYT
ROY GENET

KENNETH JOHNSON
GUY FOX

ALEX CROSBY
MAURICE FOX

BILL POWELL



	OLIVER WORDEN	TOM HESTER	FRANK BOYDSTUN	
FENNEL WALLER		WERNER PETERSON	PAUL MOTT	CECIL LLOYD

BASEBALL

Southern Branch 7; San Diego State 5.
Southern Branch 10; San Diego State 3.
Pomona 7; San Diego State 2.
Pomona 19; San Diego State 3.
U. S. C. Dental College 5; San Diego State 2.
San Diego State 6; U. S. C. Dental 4.
San Diego State 12; Cal. Christians 1.

THE FIRST YEAR of any sport is invariably the most difficult, and baseball is no exception. It has had a hard time this year, due to recency of innovation, prejudice, lack of funds, and players unaccustomed to playing together. In spite of all this, Coach John Hancock has turned out a nine which caused the Southern Branch coach to compliment its hard-hitting qualities and say that he regarded it capable of defeating any team in the conference.

The baseball season began February 26, with the first interclass game, which resulted in a 5-5 tie. The freshmen, however, won clear title to the intramural championship in a second game, which they won 8 to 1.

Kenny Johnson, captain, from Seattle, Washington; forty-five innings. Was fastest man on the team, and second best batter; played outfield and catcher equally well. Terry Geddis, San Diego high school; forty-five innings; a good first baseman; was slow in getting his batting eye, but is improving with every game. Charles Smith, Coronado, second baseman; forty-five innings; third highest batting average; fast for a big man, and covered second sack in good style. Lucien Doud, Sweetwater, third baseman; forty-five innings; a good fielder though a trifle weak on the bag.

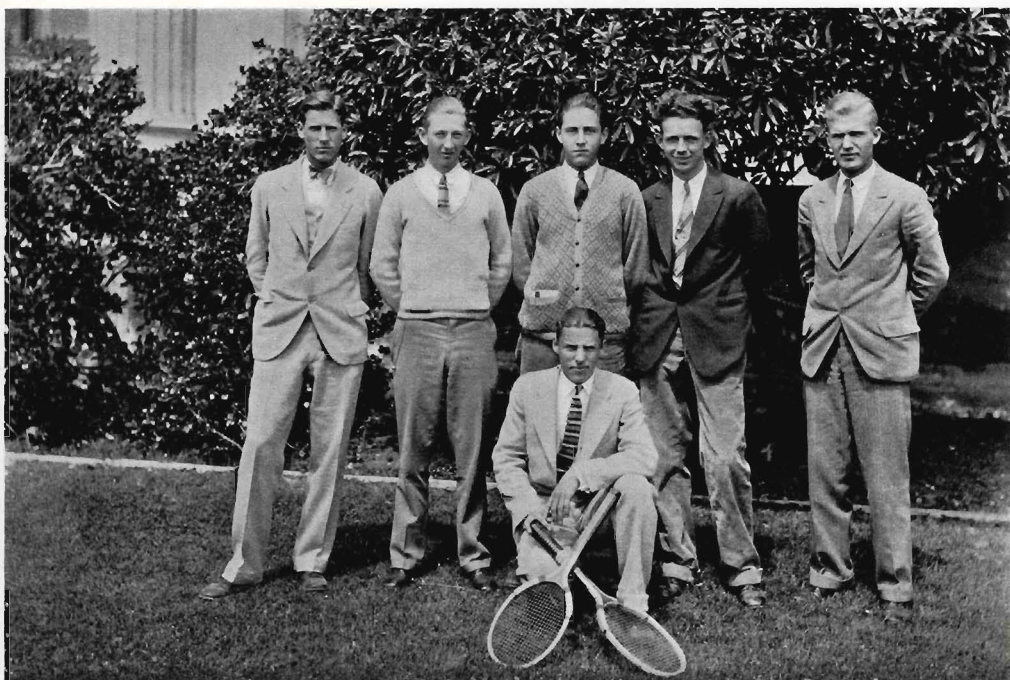
Paul McMichael, San Diego high, short stop; forty-one innings; flashes of good playing, but uncertain. Frank Paine, El Centro, outfielder; forty innings; has a good baseball head. Kingsley Tuttle, outfielder from Grossmont; thirty innings; best batter on the team. Walt Deal, Escondido, outfielder, infielder and catcher; twenty-seven innings; most versatile man on the team. Charles Levy, Grossmont, pitcher; twenty-one innings; good, steady, dependable pitcher.

Lester Penry, Grossmont, pitcher; sixteen innings; hard to hit because of under hand and side arm delivery. Kenny Chipman, Army and Navy, outfielder; fourteen innings; good at getting on base. Lawrence Carr, Grossmont, outfielder; eleven innings; good fielder, but weak at the bat. George Telford, Ramona, catcher; ten innings; good man, but forced to give up baseball account of work.

Kenneth Goddard, San Diego, catcher and outfielder; nine innings; general utility man. Charles Bennett, manager, Cleveland Tech.; pitcher; five innings; good curves but a trifle slow; Jack Vogt, St. Augustine, pitcher; four innings; a good southpaw but not consistent. Stuart Cook, Bovina, Mississippi, outfielder; with a Southern nature.



KENNETH JOHNSON	LESTER PENRY	WALTER DEAL	TERENCE GEDDIS	CHARLES SMITH
LUCIEN DOUD	CHARLES LEVY	LAWRENCE CARR	FRANK PAINE	
PAUL McMICHAEL		KINGSLEY TUTTLE		
STEWART COOKE	KENNETH GODDARD	JACK VOGT	CHARLES BENNETT	KENNETH CHIPMAN



TENNIS

CHRISTENED with scintillating play by experts, and brought up on a diet of pure enthusiasm from 150 tennis playing Aztecs, the newly-born tennis courts on the campus are well started on their way to a promising tennis career. Never before has such a large proportion of the student body shown so keen an interest in tennis as during the season of 1925-1926. The two cement courts were continuously filled with men and women, who played tennis as never before, on their smooth, concrete surface. It is significant that along with the rise of tennis from obscurity to a high place among American games, State College has paralleled its progress by the building of these courts.

Due to the unusually tardy appointment of Ted Treutlein as manager of Tennis, the college found itself with a powerful men's team but no matches to be had. This singular condition was due to the fact that by the time the Aztec machine was in running order the other colleges had finished their schedules, and broken up their teams.

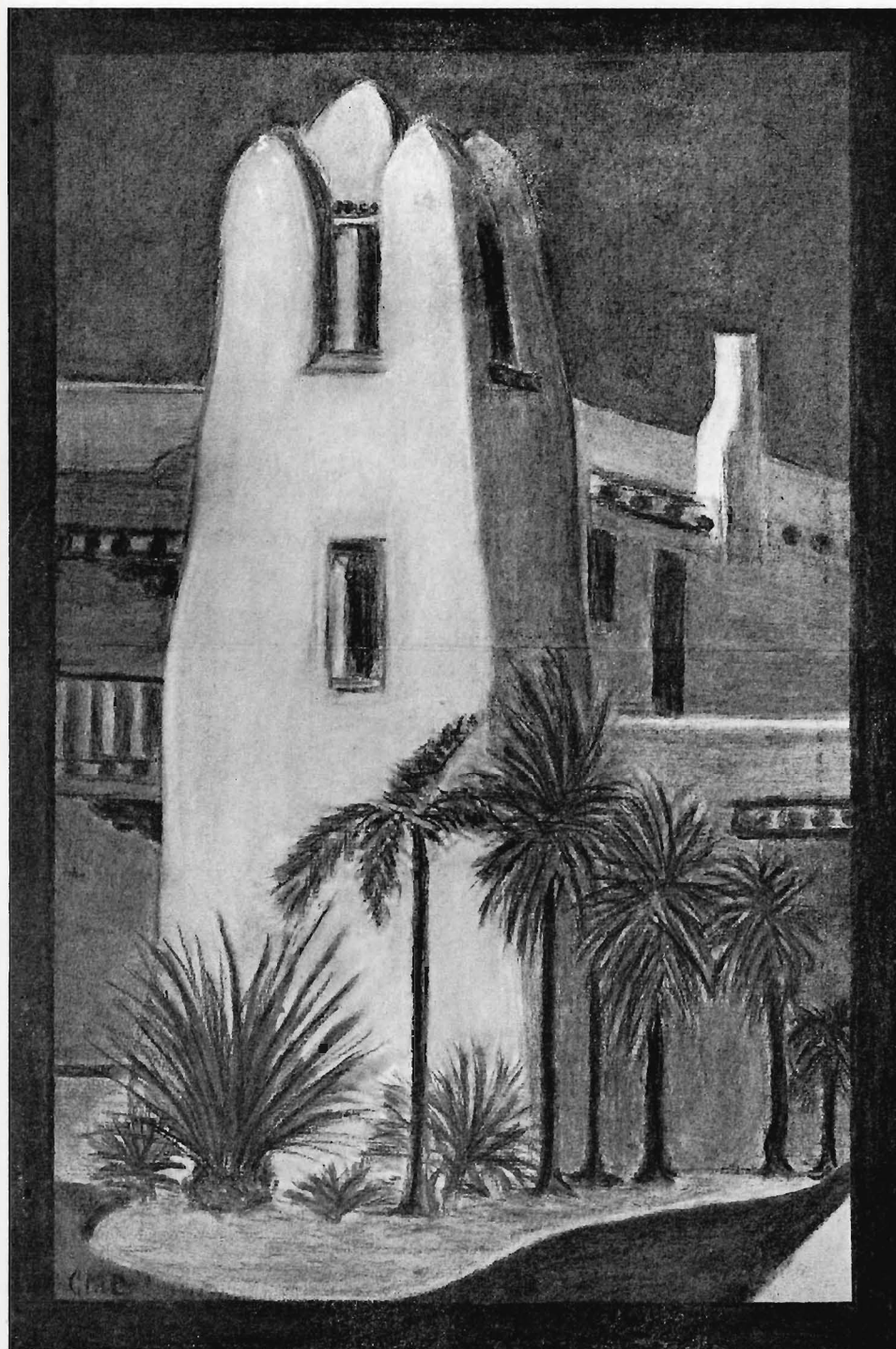
Nevertheless, practice and co-operation on the part of the players developed a team which climaxed a dull season by making an excellent showing at the Ojai Valley Championships in April. The members of the Varsity who made the trip were Ben Hayward, a formidable chop stroke artist; Phil Wilkinson, of the dynamic energy of a cyclone; Leo Hanson, possessor of a well-balanced game; and Fred Bartlett, who makes good use of a forehand chop and a lethal backhand drive. The fifth member of the Varsity was Earle Bradley.

In addition to first team tennis, several tournaments from within the college, both men's and women's, held the Aztec racket wielders' attention throughout the year. Among the women players Evelyn Harper was supreme, with Kathleen and Jean Strong close at her heels.

Humor

"Arizona Building"





ROLL OF HONOR

The following business firms of Southern California are those whose co-operation and friendly spirit have made possible the publishing of this book and to whom the students of San Diego State College extend their heartiest good wishes:

Antiseptic Laundry	Nisbet's Pharmacy
H. L. Benbough Co.	Normal Electric Bakery
Students' Book Store	Russ Lumber Mill Co.
Bunnell Photo Shop	San Diego Sun
Carpenter's Stationery Stores, Inc.	San Diego Clearing House Association
College Pharmacy	San Diego Consolidated Gas & Electric Co.
College Cafeteria	San Diego Union
Walter Dibb	Scribner Bros.
Eagle Drug Co.	Hotel St. James
Famous Studio	Sunset Engraving Co.
Frye & Smith	Sunshine Recreation Co.
Hillcrest Shoe Store	Thearle Music Co.
Jessop & Sons	The Typewriter Shop
Chas. McCormick Lumber Co.	Vreeland Studios
Merriken Drug Co.	Harry C. Warner
Monarch Drug Co.	Weber-McCrea Co.
John Moynahan Co.	
New York Costume Co.	



JEWELERS FOR 55 YEARS

SEE US FOR

Class Pins—Emblems—Trophies

WATCHES AND FINE JEWELRY

J. Jessop & Sons

Jewelers, Optometrists, Stationers

952 FIFTH STREET

(Have your eyes examined)

FARMER: I want to buy a cow, merchant.

MERCHANT: What kind of a cow?

FARMER: I don't know. I reckon one cow is as good as anudder.

* * *

And the Lord spake unto Moses, "Moses, Moses, come forth." But Moses slipped and came fifth, thereby losing the Hebrew race by one point.

FIRST HE: Is your girl deaf and dumb?

SECOND HE: She would be if she were deaf.

* * *

You can always push a pen, but a pencil must be lead.

* * *

What is a grapefruit? Ah, a grapefruit is a lemon that had chances and took advantages of them.

Swapping Photographs

Used to be the custom in the days of the old family album

The album has vanished but the pleasure of looking over the pictures of your friends is still there

See that your friends have your photograph in their collection

BETTER SIT AGAIN FOR A PHOTOGRAPH

Freeland

ARTIST PHOTOGRAPHER

Phone 3-1658

1047 Fifth St.

OFFICIAL PHOTOGRAPHER FOR THIS ANNUAL

QUESTIONS FOR FRESHMEN

The following is a revamped version of the famous Aztec Purity Test. The answers made by the recent Frosh class, have been duly preserved in the archives of the Dean's office.

1. Give your name in full. (Take special pains as to the correct use of capitals.)
2. Give your age. (Co-eds over thirty exempt.)
3. What was your great grandfather's middle initial? Where was he born, and why?
4. Have you had the rabies? When?
5. Do you wear false teeth? When?
6. Do you prefer Mellin's Food or condensed milk?
7. Do you use Ivory Soap? Why? Where? When? Under what circumstances? On what occasions? (Answer as concisely as possible.)
8. Have you ever cried for Castoria?
9. Does your mother think you should run State college?
10. What do you think of Colby?

* * *

"Where were you last night?"
"It's a lie."

WHY DID YOU COME TO STATE?

The above question was asked a number of prominent Aztecs. We print a few of the answers herewith.

"The varsity needed me"—Paul Mott.
"To show how much I know"—Carl Maxwell Johnson.
"To be a Hod"—Fenton Batton.
"Easy to get in"—Bill Powell.
"To cut recitations"—Ed Randell.
"To pose as an example of co-education"—Alyce Foster.
"To be a real sporty little boy"—Cecil Lloyd.
"To become a broader man"—Leavenworth Colby.
"Don't know"—Frank Kyes.

* * *

SHAMUS: Say, Whimpus, Sandy is so cheap he licked his wife yesterday.

WHIMPUS: How is that, Shamus?

SHAMUS: She refused to fry his bacon in lux so that it wouldn't shrink.

* * *

LITTLE WILLIE (pointing at hippopotamus in zoo): What th' hell's that?

FOND MOTHER (slapping Willie's hand): Dammit, haven't I taught you not to point at things?

Getting H. L. Benbough's furnishings
is like a mark of A in a chem. exam.

—you know you've done something worth while

H. L. Benbough
FURNITURE
FLOOR COVERINGS
5th at B

When you want something nice for Mother or Dad—*we have it!*

Coming as a result of a long crying demand, the State has loosened up sufficiently in the manner of endowments to install new courses for Aztec students.

The endowment is as follows:

I. The Tom Hester Chair (and table) of Applied Poker. Tom Hester, P. D. Q., Professor of the Science and Art of Poker. Kingsley Tuttle, D. J., P. D. Q., Associate Professor of the Science and Art of Poker. Donald Brand, Instructor in Poker.

CLASSES

1. The Science of Poker. Its fundamental principles. The art of stacking the deck and dealing. The Anti and Science of Raising.—Professor Hester. Open to all students with no less than five failures in other college work. All others accepted at the pleasure of the Professor.

2. The Theory and Practice of Bluffing. Weekly exercises in Standing Pat with supplementary lectures on the Art of Raising and Theory of Calling—Professor Tuttle.

3. History and Development of the Jack Pot, with investigations into the modern and approved methods of Opening.—Mr. Brand.

* * *

Don't say Wombat; say Wampff.

INEBRIATED: Gee-hic-but your dumb.
BINGED: So'm I-hic.

* * *

Stockholm, April 1, 1926—The Libel prize in Literature was today awarded to Horace Taft.

* * *

POME

Freshmanus, kissubus
Sweet coedorum,
Coedibus likibus
Wanti sumorum.

* * *

"Adam, quick! The baby just swallowed a safety pin."

And Adam laughed and laughed—for he knew safety pins hadn't been invented yet.

* * *

SISTER'S BEAU (to Her Kid Brother):
I'll give you a pin if you won't come into the parlor tonight.

KID BROTHER: No, I do not want a scarf pin.

BEAU: I'll give you a chain.

BROTHER: No, I don't want a chain.

BEAU: I'll give you a ring.

BROTHER: No, I do not want a ring.

BEAU: Then what do you want?

BROTHER: I wanta watch.

BETTER PRINTING

—more of it

The enormous volume of printed matter of all kinds produced in our plant is convincing proof that there must be something in the quality of the service, promptness of execution and fidelity to detail which characterizes our work, that meets with the approval of our customers. This close attention to details has contributed more, perhaps, to our success than any other one feature. We can help you.

FRYE & SMITH

Eight-Fifty Third Street

Telephone, Main 8175

NISBET'S PHARMACY

R. J. NISBET, PH. C.



BROADWAY AT SIXTH

This is the grave of a cute little girl who
had a cute little figure, a cute little curl,
a cute little foot, a cute little way—

A cute indigestion took her away.

* * *

WIFE (taking driving lesson): Heavens,
here comes a big truck. Which way shall
I steer, dear?

HUSBAND: Oh, steer right for it, Mary,
steer right for it.

TABLE TALK OF MR. GISH

I don't see how he gets that way, assign-
ing us five pages besides the grammar. . . .
Ya, but the Toronto team is faster on the
ice. . . . What do you want, steak every
night? . . . You got to have a drag, that's
all there is to it. . . . She does not; I
was talking to Fred. . . . Maybe he can,
but he'll never make the team unless he
. . . . Who threw that water? . . . Well,
I don't give a damn for his course, I'm
just taking it to. . . . Cut out that riding
. . . . If she doesn't write by tomorrow to
hell with her. . . . All right, but where
would we get any freshmen if it wasn't
for the teams?

* * *

LITTLE JASON: Muddy, you should see
how I have grown!

MOTHER: Grown, Jason, grown!

LITTLE JAY: The hell you say, why
should I groan?

* * *

CONNIE: You don't intend to stay out
of school next year on my account, do
you, Tom?

TOM: No, I intend to stay in school on
Dad's.

* * *

FATHER: There was something funny
about you last night, daughter.

OFFSPRING: I know, but I sent him
home as early as I could.

* * *

Lashes to lashes,
Dust to dust.

If she puckers her lips,
Then in God we'll trust.

CARPENTER'S STATIONERY STORES INC. 952 SIXTH STREET . . . SAN DIEGO

Social and Commercial Stationers

School Supplies

Personally we never thought the Venus de Milo beautiful, but you have to hand it to her when it comes to eating.

(Note to Beginners—You see, she hasn't any arms so if she eats anything it has to be handed to her. Tophole, what?)

* * *

CLERK: They arrested a woman downstairs this morning.

STENO: No! How come?

CLERK: They caught her stealing a mirror.

STENO: 'Stoo bad.

CLERK: Yep, but that's what comes of taking a glass too much.

* * *

MALE FROSH: You live in the house next door, don't you?

FEMALE FROSH: Yes. Why?

MALE FROSH: Oh nothin'. I just haven't seen much of you.

FEMALE FROSH: No, I live on the other side of the house.

* * *

"And why, Roderick, did you kiss that little Eyetalian girl?"

"You said, papa, I should never let a dago, by without I learned something new."

* * *

WELL, LET'S SEE

Football Note—There were plenty of supporters in the stands but not a dam solitary garter.

* * *

"So you like my article. What part do you admire most?"

"Oh, I think those quotations from Byron are simply splendid!"

Get the "Eagle Drug Habit"

Every Prescription
Filled Promptly and Accurately
from the Purest Drugs.

Try Our Fountain Specialties.

EAGLE DRUG COMPANY

W. W. COPELAND
Corner Fifth and C Streets

"Is your apartment roomy?"

"Roomy—hell! We have to use condensed milk!"

* * *

HENRY: Just imagine, thirteen thousand seals were used to make fur coats this year for the Christmas trade.

ETTA: Ain't it wonderful what they can train animals to do in this present day and age.

ANTISEPTIC LAUNDRY

3481 NATIONAL AVE. MAIN 3588

WET WASH, SEMI-FINISH.

ROUGH DRY—EVERYTHING

"SWEET AND CLEAN"

Two deaf men met on the same road.
FIRST DEAF MAN: "How do you do?"
SECOND DEAF MAN: "How do you do?"

FIRST D. M.: "Going fishing?"

SECOND D. M.: "No, I'm going fishing."

FIRST D. M.: "Oh, I thought you said you were going fishing!"

* * *

OFFICER: We will now fire at will.

WILLIAM: Please, sir, what have I done?

* * *

A caterpillar is an upholstered worm.

* * *

PROSPECTIVE TENANT: Have you got hard water?

LANDLORD: Yes indeed. It's so hard that you have to pick your teeth every time you take a drink.

* * *

ALGY: What becomes of your lap when you stand up?

REGGY: It retires to the rear and bobs up under an assumed name.

* * *

Nearly every man is a firm believer of heredity until his son flunks out of college.

I'll sing you a song of a Jewish boot-legger.

The words to it are few,
He-brew, he-brew, he-brew,
He-brew, he-brew, he-brew.

* * *

News Item: Convicts report to Warden that they have been robbed by fellow prisoners.

Why, the dirty crooks!

* * *

"What's the sense of having a horticultural college?"

"Oh, for the development of wild oats."

* * *

CONDUCTOR: I got your fare.

HONEST: I know you did. This one's for the company.

* * *

AFTER THE BRAWL WAS OVER

FIRST SOPHOMORE: Let's take a list of the Ten Commandments.

SECOND MORON: What do you want it for?

FIRST SOPHOMORE: I want to check up to see if I've missed anything.

* * *

"Yes, Felix is collecting garbage now."

"Oh, isn't that offal!"

BRANCH YARDS:

SAN BERNARDINO, CALIF.

RIVERSIDE, CALIF.

OCEANSIDE, CALIF.

PHONE MAIN 4991

CHAS. R. McCORMICK LUMBER CO.

Wholesale and Retail Dealers

FIR, REDWOOD, SPRUCE AND CEDAR

SASH AND DOORS

BOX SHOOK

ROOFING AND GENERAL MILL WORK

Office, Planing Mill, Yard and Wharves,

FOOT OF TWENTY-FOURTH STREET

San Diego, Calif.

DOROTHY: I've fixed Kitty so she will answer my letter at once.

CHARLOTTE: How did you do it?

DOROTHY: I wrote her a lot of gossip and forgot to send the middle pages.

* * *

LOW BRIDGE

KIND O. M.: And do you know why Santa Claus didn't bring you anything, little girl?

DOLL-FACED CHILD: Yes, damn it, I trumped father's ace in the bridge game Christmas eve.

* * *

"Shure, we're cuzzins be marriage, ben't we?"

"Chorse we be, we both married females."

* * *

"Is the world flat or round?"

"Neither."

"What is it, then?"

"Crooked."

* * *

FLORA: Did you ever sit up with a dead person?

FLOSSIE: Partly.

FLORA: What do you mean—partly?

FLOSSIE: He was dead from the ears up.

"I never can tell these classical composers apart, can you?"

"No, my dear, they're all Grieg to me."

* * *

"You said the land you sold him was on the level."

"And wasn't it?"

"Yes, on the sea level."

* * *

PERSISTENT INTERRUPTER: Liar! Liar!

SPEAKER: If our friend will give me his name instead of his profession, I shall be delighted to make his acquaintance.

* * *

A castaway from a wrecked ship was captured by cannibals. Each day his arm was cut by a dagger, and the natives of the island would drink his blood. Finally, one day, he called the king. "You can kill me and eat me if you want to, but I'm getting damn tired of being stuck for the drinks," he protested.

* * *

"Hey, you," thundered the rushee from Coronado, when they brought his napkin at dinner. "Take this thing away. I guess I know when to use a handkerchief without having no blamed hints thrown at me."

A HAPPY VACATION



and remember that when you come back to State next Fall that we will be prepared to offer you a larger assortment of supplies and a newer, better Service.



THE STUDENTS' BOOK STORE

OPPOSITE REAR ENTRANCE TO MAIN BLDG.

Packard

"Serving with Distinction"

Packard Six 5-Passenger Sedan, \$2928 Here

JOHN MOYNAHAN

208 C Street

Phone 3-3507

ALGERNON: I say, my good man, will you drive me all around town?

MON BON HOMME: Yeh, if I can get a harness to fit you.

* * *

"I hear your brother is out of college. Is he doing any work?"

"Is he! Why he worked for three hours this morning trying to get a dollar out of father."

* * *

"I get all in of late."

"Do you get in late a lot?"

"No, but I get a lot in late."

WIFE: Hubby, what kept you out so late last evening?

HUBBY: I was out with a chiffonier.

WIFE: Chiffonier? Why, you don't know what you are talking about. A chiffonier is a sweet little dresser.

HUBBY: Yes, that's her.

* * *

OLD LADY: Poor man, and is there no way to get rid of those cooties?

TRAMP: Dat's easy. I takes a bath in de sand 'n den rubs down wit alcohol. De cooties gets drunk den, and kill each odder throwin' rocks.

ALL THE NEWS—

ALL THE TIME—



Featuring School and
College Activities

THE SAN DIEGO SUN

MAIN 6121

"Oh Ma, C'mere quick."
"What is the matter, Mary?"
"Look, Johnny ate all the raisins off
that sticky brown paper."

* * *

TRAFFIC COP: Can't you see the sign
is turned against you?

DRIVER: I know, but I wanted to get
a head start on the others.

* * *

JUNKMAN: Any rags, paper, old iron to
sell?

HEAD OF HOUSE: No, go away. My
wife is away for the summer.

JUNKMAN: Any empty bottles?

* * *

HE: How now, Ximena, dost know the
difference between riding in a trolley car
and in a taxi?

SHE: In sooth, Rodrigue, no.

HE: Then we may just as well take a
trolley car.

* * *

"How did you get that cauliflower ear?"

"In a boxing match."

"Yes and my folks were tickled to
death."

"They were?"

"Sure, they are vegetarians."

The Typewriter Shop

SALES, RENTALS, REPAIRS

—

Factory Rebuilt Typewriters, All
Makes; Carbon Paper and Ribbons

—

MAIN 1230 947 EIGHTH ST.

"See that wriggling woman going
there."

"Yeah, why?"

"She's so dumb she thinks a track meet
is a railroad crossing."

* * *

"Do you know, old Joe is crazy; they're
taking him to the asylum."

"Let's go and see him off."

* * *

"Before we were married you used to
call me every day."

"Yes, I still do. But not the same
things."

ELECTRICAL APPLIANCES FOR EASIER, COOLER, KITCHEN WORK

The more electrical appliances you have at hand on your
kitchen table, the easier your work; and you are often saved
the necessity of turning on the kitchen range.

You will appreciate the help of an electric griddle, toaster,
percolator, grill, grinder and fan, especially in summer.

The San Diego Consolidated
Gas & Electric Company

857 SIXTH STREET

FRANKLIN 4121

BYLLESBY ENGINEERING &
MANAGEMENT CORPORATION

THE SAN DIEGO UNION

*A Tribute from the Dean of the State Press to the San Diego Union,
the Pioneer Newspaper of Southern California*

"I do not think there is another paper in this country which can, as fairly as the San Diego Union, claim that it has always been the leading factor in promoting the interests of the community in which it is published. The Union has been on the job from the beginning, and the present prosperity of the city is much due to its energetic, consistent, and continuous efforts to acquaint the outside world with the advantages of the fine harbor on which it is situated. I am proud that I was once connected with a journal that can make such a boast."

*This Tribute to the San Diego Union was paid by the late John P. Young,
managing editor of the San Francisco Chronicle for many years.*

GUEST: Look here, waiter, how long do I have to wait for that half portion of duck I ordered?

WAITER: Till someone orders the other half. We can't go out and kill half a duck.

* * *

"So's your old man."

"When you call me that smile."

"Can anyone tell me where I can find a nice girl with bad habits?"

"Whad did you get pinched for last night, Ben?"

"I just heaved a heavy sigh in the Hawaiian show and broke up the whole works."

* * *

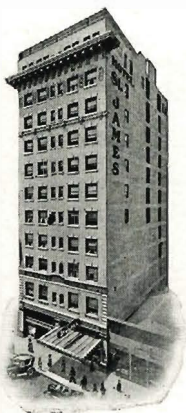
HE: I wouldn't wire home for money. Why don't you write?

OTHER HE: You can't send a letter collect.

THEY ALWAYS COME BACK

TO THE

Hotel St. James



Homelike Atmosphere
Overlooking a Beautiful City
That Cheerful Courtesy
Eleven Floors of Solid Comfort
Located "in the Business Without its Buzz."

Sealy Mattresses
That You May Sleep in Comfort

Just for Your Safety
Absolutely Fireproof
Marine and Mountain Views
Equipped to Please You
Sea Washed Air

SIXTH BETWEEN E AND F

SAN DIEGO

WELCOME DEL SUDOESTE

WALTER DIBB

MANUFACTURING JEWELER

FINE PLATINUM, GOLD AND
SILVER WORK

C AT FIFTH

ROOM 40 SEFTON BLDG.
UPSTAIRS

GEORGE: Well, I answered a question in class today.

FRED: What answer did you give?

GEORGE: Present.

* * *

"Helene is two-thirds married to Bob."

"Really?"

"Yes, she's willing, and the preacher is willing."

* * *

VOICE FROM UPSTAIRS: Rachel, is the light out down there?

No, fadder, we turned it out.

Dot's a good girl.

HE: Am I the first man you ever kissed?

SHE: Yes, dear, and by far the nicest.

* * *

"You were awfully drunk last night, Al."

"Why, I had only one glass."

"One glass. Impossible."

"No. They kept filling it up all the time."

* * *

SAILOR'S WIDOW: Is it true that sailors have a girl in every port?

SAILOR: Na-a-a-ah. We don't stop at every port.

RUSS LUMBER AND MILL CO.

MAIN 7134

ALL THE PRODUCTS OF
LUMBER

Yard—Mill—Water Front between Union and Second Streets

General Office, Corner First and I Sts.

San Diego, California.

SERVICE THE BASIS OF TRUE WEALTH

TRUE wealth is the abundance of human desire which accrues through service rendered to others.

Individuals and institutions, alike, find in service the basic principle of true wealth.

The Clearing House Banks of San Diego endeavor to provide a real service for those who require financial advice and facilities.

SAN DIEGO CLEARING HOUSE ASSOCIATION

Bank of Italy
Union National Bank
First National Bank
First Trust & Savings Bank
United States National Bank
San Diego Trust & Savings Bank
Southern Trust & Commerce Bank
Security Commercial & Savings Bank

"Oh, yes, I've had quite a life. Such a gay young liver—"
"Heavens. Does it trouble you often?"

* * *

"Was it a case of love at first sight?"
"Absolutely; my first sight of his new Rolls-Royce."

* * *

"I hear you are out for track."
"Yep, getting prepared for being run out of school."

* * *

BUTLER: Where's the guard for your fraternity pin?

GOTT A. NICKLE: I let him off for the afternoon.

* * *

HE: Are you fond of autos?

HIM: Am I? You should see the truck I ate for lunch.

* * *

The Glue Club will now rise and sing,
"The Upheaval Scene from Mal de Mer," or "Thank God, it's Valsparred."

* * *

"Has anything startling happened at the country club lately?"

"Yes, a couple of men from the country asked if they might join."

GIRL: Oh, you mean to say that I will never see your face again?

BOY: Yes.

GIRL: Why?

BOY: I am going. Yes I am going—

GIRL: Where? Oh, where? I must know so I can follow you.

BOY: I am going to raise whiskers.

* * *

STAGLINER (at house dance): Say, don't you think Herb's girl over there is plenty young to be wearing such a decollete gown?

ANOTHER: Well, yes; she's surely a stripling.

* * *

CO-HER: Now tell me, Roscoe, did you "pet" any at the Prom? Come on, now, confess.

CO-HE: Well, I went out once at about nine o'clock and again at nine-thirty and again at half past ten and—

CO-HER: Wait a second. You're not confessing, Roscoe, you're bragging.

* * *

"I lost \$10 yesterday."

"How's that?"

"Cotton went up \$10 a bale, and I didn't have a bale."

FROM PILLS TO LOVERS !

TIME was when folks entered a drug store for their health alone . . . but now you can find anything from pills to lovers there.

The modern Drug Store is a mighty popular place whether you're looking for a corn cure, a box of stationery, a refreshing drink, a face powder, a safety razor or a full meal.

Every woman knows of the beauty aids she can secure at a Drug Store, and every man knows of the quick luncheon service at the fountain. You are all invited to meet each other here.

MONARCH DRUG COMPANY

TWO STORES

FIFTH AND
BROADWAY

THIRD AND
BROADWAY

Normal Electric Delicatessen & Bakery

4241 PARK BLVD.

HILLCREST 1292-J

"Naw," said the brother of the pugilist,
"naw, Bill ain't got no cauliflower ear,
'tain't much more'n a brussels sprout."

* * *

NEIGHBOR: Was your son home for the
holidays?"

FATHER: Well, if he wasn't, somebody
else borrowed the car during Christmas.

* * *

"Did you know Matthew Arnold be-
lieved in spiritualism?"

"No."

"Well, how about *Lines Written by a
Death-Bed?*"

* * *

"Gee, this guy Freud must a helped the
song business a lot."

"Why?"

"Cause I heard someone in psyche
class say he was the original dream-daddy.

* * *

"Foiled," snarled the chocolate bar as
it went through the wrapping machine.

* * *

HOPEFUL: I wonder if it is true that the
length of a boy's arm is equal to the cir-
cumference of a girl's waist?

HOPELESS: Let's get a string and meas-
ure it.

SHE: I won't even consider marrying
you. You are the most stupid, idiotic,
asinine creature on earth. You are repul-
sive, abhorrent, and miserable. I
wouldn't marry you if you were the last
man on earth. I hate you, you are des-
picable.

HE: Do I understand that you are
rejecting my proposal?

* * *

"What do you mean by coming to a
dance with me and then spending all your
time in an alcove?"

"That wasn't no alcove—that was a
Cadillac."

* * *

WARDEN: (to man about to be elec-
trocuted)—Have you got anything you
want to say?

MURDERER: Nothing doin', do you
think I'm going to incriminate myself?

* * *

MAID: Shall I take this little rug out
and beat it?

MAN: That's no rug, that's my room-
mate's towel.

* * *

BLACK: Jack is so wet!

JACK: Oh, he can't help it. He's got
a crick in his back.

* * *

"Do you read *La Vie Parisienne?*"

"Does anyone?"

* * *

HE: Heard any stories about my teeth?

HYMN: Yeah!

HE: Well, they're false.

* * *

SHE: This morning when I started to
get on the train I couldn't find the ticket,
and I know I must have held up the train
for at least ten minutes.

HE: You strong woman, bragging
again!

6th and Broadway

11 BOWLING ALLEYS
20 BILLIARD AND POOL TABLES

SUNSHINE RECREATION CO.

20,000 SQUARE FEET OF FLOOR SPACE
40 LARGE WINDOWS

FOR LIGHT, SUNSHINE AND PURE AIR.

CLEAN MUSCLE BUILDING SPORTS

TRACK MEN

The Eastern men are very strong,
But we do not boast in vain;
For on the Western prairie,
A man held up a train.

* * *

MOTHER: About what do you study at college?

SON: Sugar and spice and everything nice.

MOTHER: Why what do you mean?

SON: That's what little girls are made of, isn't it?

* * *

THE MELTING POT

"Why are you going to Europe this summer!?"

"Oh, I'm so tired of living here with a lot of foreigners."

* * *

"Remember the time we crossed the ocean?"

"Y'betcha, I can smell them cows yet."

* * *

'26: Say, buddy, why doesn't Bob ever go to affairs at school?

'27: He's looking for the kind of girl they draw in college comics.

* * *

NOT FOR THE GUMS

Four out of five have it—and the fifth one knows where to get it.

* * *

"What did you give your loud-mouthed sweetie for Christmas?"

"I gave him a muffler."

* * *

STUDENT: Helen's party so bored Jack that he fell asleep right on the davenport.

PRINCE: Oh! That's the bunk!

* * *

"Your poor husband's dead. Did he leave you much?"

"Did he? Nearly every night."

SHOES AND HOSIERY

Hillcrest Shoe Store

COR. 5TH AND UNIVERSITY

PHONE:HILLCREST 2074

BETTER SHOE REPAIRING

"Do you like boxing?"

"No, it's a lazy man's game."

"Howzat?"

"Sure, you're lying down so much of the time."

* * *

SOPH: Lend me a dime.

FROSH: What for?

SOPH: Carfare—my seat is at the other end of the stadium.

* * *

WHALE: Hi, Jonah!

JONAH: Hi, Whale! Where y' livin' now?

WHALE: Atlantic Ocean. Drop in some time.

* * *

HAT CHECK GIRL: Aren't you going to give me a tip? Why the champion tight-wad of the town gives me a dime.

IRASCIBLE OLD GENTLEMAN: He does? Well, gaze upon the new champion.

* * *

"Ho, Marimba, and if I ate my father and mother...what would I be?"

"You'd be a cannibal, Theodorus, of course."

"Tut, tut, thick one, I'd be an orphan."

SCRIBNER BROS.

JEWELERS

725 BROADWAY—UPSTAIRS

DIAMONDS, WATCHES,

RINGS AND PINS



CUSTOMER: A yard of pork, please.
BUTCHER: James, get the gentleman
three pigs' feet.

* * *

SHE: Will you please take me home?
HE: Sorry, I don't live at home.

* * *

Where is the population of the United
States the densest? From the neck up.

* * *

WITTIE: What is the most dangerous
part of your automobile?

CISM: I won't even guess. What?

WITTIE: The nut that holds the steering
wheel.

* * *

"He said he killed a quart last night."
"It's a shame to kill a quart now-a-
days. It's so young."

* * *

"Why are these mountains so rugged?"
"Carpeted with snow, you know."

* * *

JACK: Is she the kind you'd bring home
to mother?

MACK: If mother needed a maid.

* * *

She was only a plumber's daughter, but
OH BOY, those fixtures.

"Boss, can I have the afternoon off—
I wanta find my wife a job."

"Will you be back?"

"Not if I find the job."

* * *

DUMB: My girl is a bungalow girl.

BELLE: Never heard of that. What do
you mean?

DUMB: That's simple. She's shingled
in back, painted in front, and has no attic.

* * *

CLEVER LITTLE CO-ED: And don't do
anything I wouldn't do!

CLEVERER LITTLE ED: Say, I wouldn't
do half of it!

* * *

"Do you know, I'd like to be a para-
moecium."

"Ah, now you're getting cilia and cilia."

* * *

BETTY: Are you waiting for the next
mail?

PEG: No, I'm going to be a little more
particular than that.

* * *

"Why do you always carry a canteen of
water when you go hunting?"

"So I can take a chaser after every
shot."

• THE • BINGHAM • CO •

5TH AT C STREET

Wil Hite
SWIMMING SUITS

A suit that has a dash to it—really
a nifty suit cut just like a man's, of a
fabric that excels in fineness, well
tailored and shown in classy new
colors and combinations. Come in
and see them. \$5.50 and \$6.50.



MERRIKEN DRUG CO.

Drugs -- Lunches

4201 PARK BLVD.

HIL. 1292-W

STUDENT: What's the matter? Were you injured in practice?

LIMPER: No. I went to sit down on a campus bench last night and it was a shadow.

* * *

"That girl you dated last night was the homeliest thing I ever saw."

"Now, kid, you are forgetting yourself."

* * *

"What did the fortune-teller say, Betty?"

"She told me that I would marry a big good-looking blonde."

"She's crazy. I haven't enough money for us to become engaged!"

* * *

"The cost of a man's college career depends largely upon whether or not he is accompanied."

THE RETURN OF THE FALLACY

"You gonna be back with us again?"

"I thought you decided to stay up in the lumber camps?"

"My! My! Didn't you graduate?"

"You're looking great. How about getting together some time?"

"I'll bet you met a lot of nice girls and forgot all about me."

"Your marks do not warrant our allowing you to continue this semester."

"You haven't paid us for that last meal ticket."

* * *

OLD LADY: Poor man. And is there a way to get rid of those cooties?

TRAMP: Dat's easy. I take a bath in de sand and den rubs down wit alcohol. De cooties gets drunk and kills each odder trowin' rocks.

Everything in Music

San Diego's oldest and largest music company extends congratulations and best wishes to the State College Class of 1926.

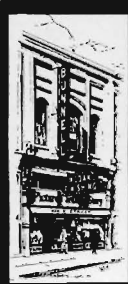
TO THE CAUSE of more and better music in our schools, community and homes, this Company stands pledged. To the better attainment of that end we urge your co-operation and solicit your patronage.



Thearle Music Co.

640 BROADWAY

PHONE MAIN 4122



**KODAK
FINISHING**

REMEMBER
YOUR FILM CAN BE
DEVELOPED BUT ONCE

**BUNNELL
PHOTO SHOP**
414 E STREET

LINOTYPING

FOR PARTICULAR PRINTERS

HARRY C. WARNER

831 EIGHTH ST. PHONE 3-2388

The Cover for this Annual

WAS CREATED BY

WEBER-McCREA COMPANY

421 EAST SIXTH ST.

LOS ANGELES, CALIF.

New York Costume Co.

835 SIXTH STREET
Snyder Building, Upstairs

Costumers

TUXEDOS
Main 0745

Compliments
COLLEGE
CAFETERIA

JACK NOYE - - - MGR.

"Cigarettes and soda water; bonbons and booze, sandwiches and sorority fudge: poison on every hand."

* * *

"Hamlet is the tragedy of tackling a family problem too soon after college."

* * *

"You are not treating a girl right unless you ruin her digestion."

* * *

HE: Teach me the Charleston?

SHE: If I can remember it. Let's see—it was one of those quaint old dances they were doing last summer, wasn't it?

The Famous Studio

ALICE WHITNEY SMITH, Mgr.

*Portrait Artist and
Photographer*

TELEPHONE 639-05
1026 SIXTH STREET
9 A. M. to 6 P. M.

MAX: That man has the courage of his convictions.

CLIMAX: How so?

MAX: He eats in his own restaurant!

* * *

PROF: Have you ever had hallucinations?

STUDE: Yes, twice. The first time it didn't take, but the second time it left a big scar.

* * *

"Some men reduce by exercising—others eat at fraternity houses."—U. of Wash. Columns.

Compliments
COLLEGE PHARMACY

DICK FLEMING
4233 PARK BLVD.



Before

Patronize
our
Advertisers



After



New Swamp Shampoo

Straws
cheap



Mail or
female?



Heap chief



Our bony
lassy



Wanted-
Harps



Come on kid!



A thorn-
roses



Three 'n one



Beauty Betrayed



Buggy Rugs



Kneel-ye fresh



Fencing?



